



Quote

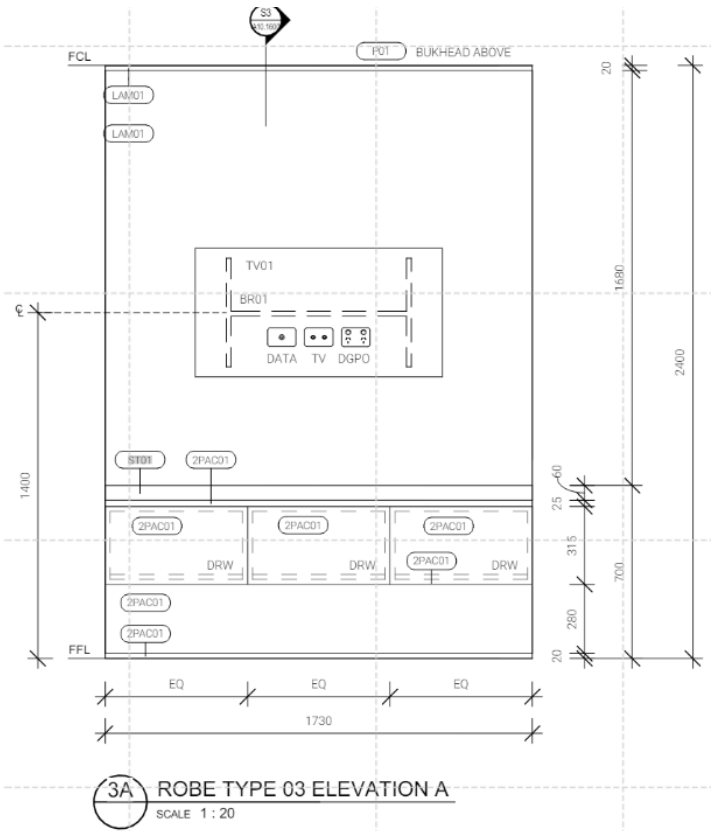
BILL TO	SHIP TO
---------	---------

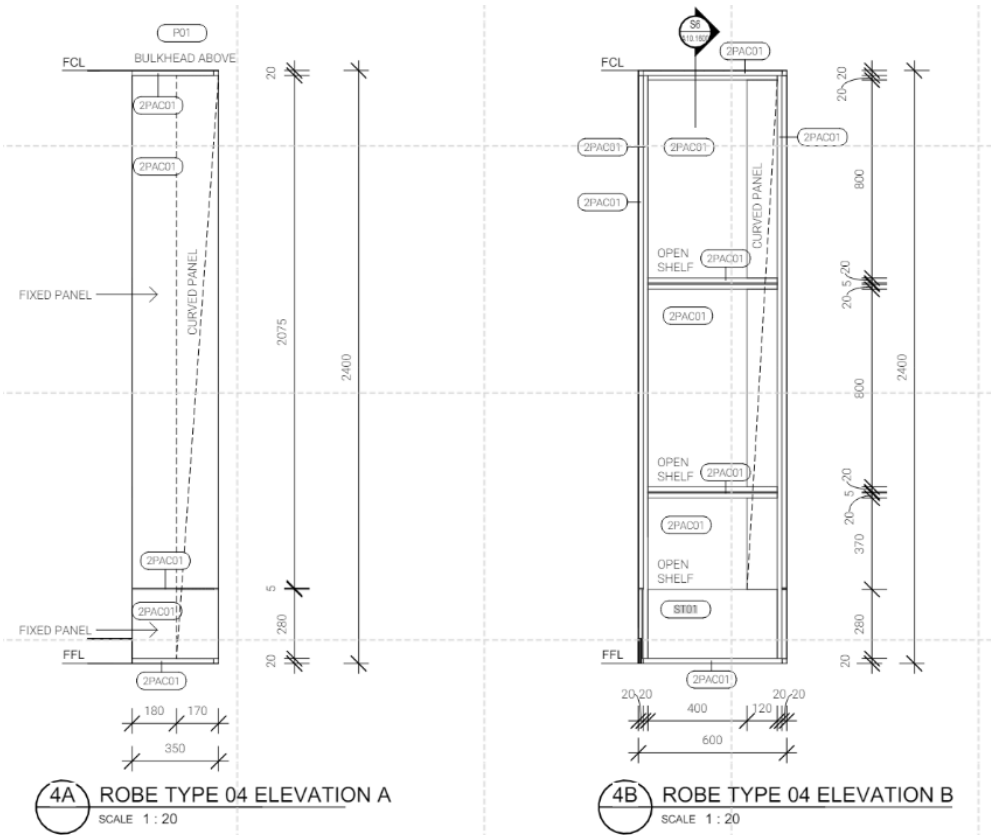
Item Name	Qty Unit	Markup	Sales Amt
ST-10 - Travertine, Roman Classico Light - Vein Cut	0.00 M²	0.0%	\$0.00
ST-10a - Install	19.68 M²	33.3%	\$2,885.63
ST-10b - Protection	18.89 M²	33.3%	\$125.92
ST-10c - Saw Cut	19.68 M²	33.3%	\$1,180.46
ST-10d - Stone Sealing	18.89 M²	33.3%	\$1,133.06
ST-10Ea - Bullnose Edging	1.12 M	33.3%	\$67.18
ST-10Eb - Caulking	55.11 M	33.3%	\$514.14
ST-10Ec - Mitre Cut	44.71 M	33.3%	\$2,681.72
ST-10Ed - Miter Cut & Glue	5.84 M	33.3%	\$389.24

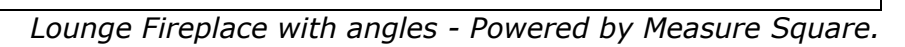
Material	\$0.00
Labor	\$8,977.35
Tax 0.0%	\$0.00
Total	\$8,977.35

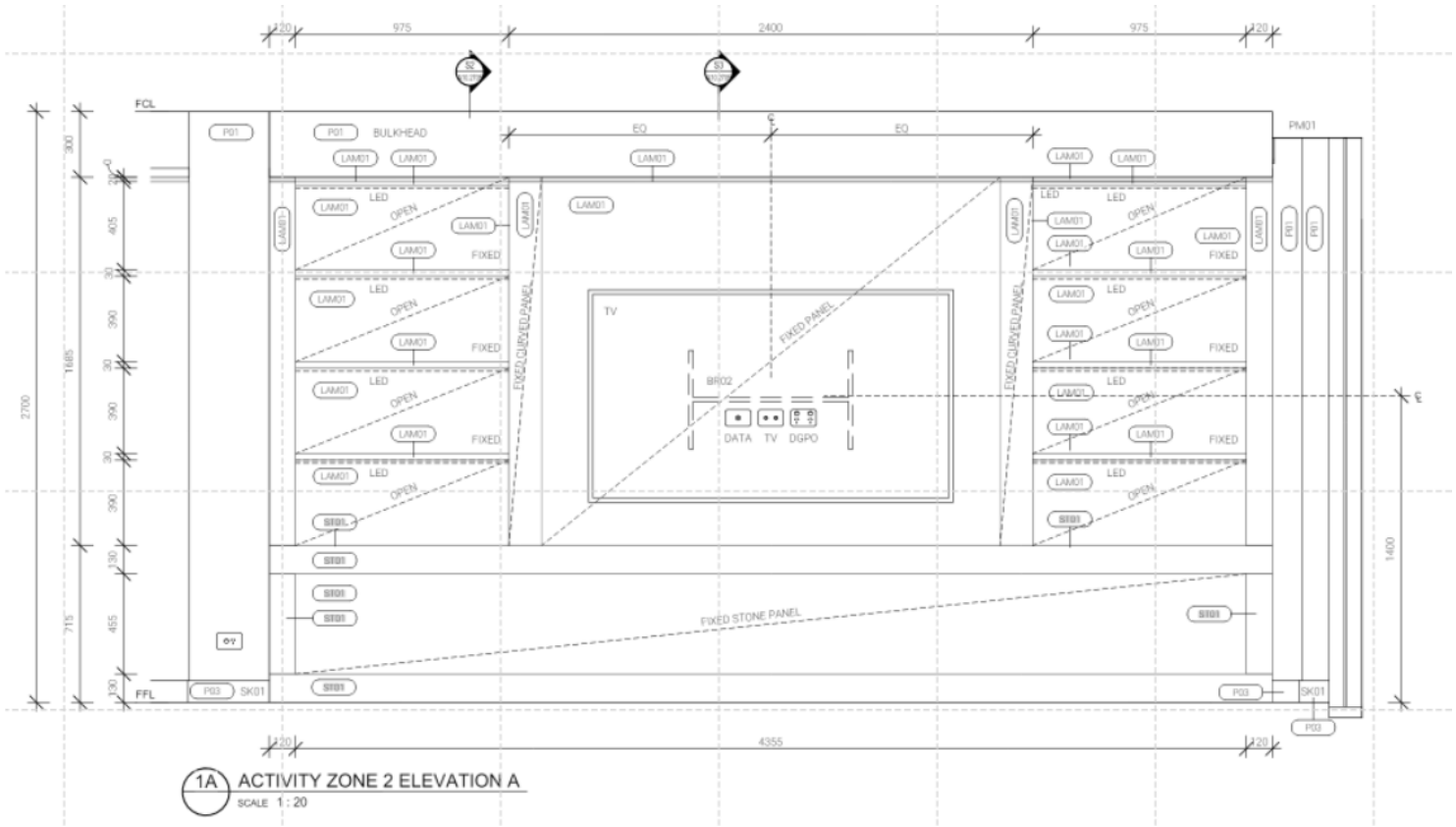
CUSTOMER ACCEPTANCE AND APPROVAL	
----------------------------------	--

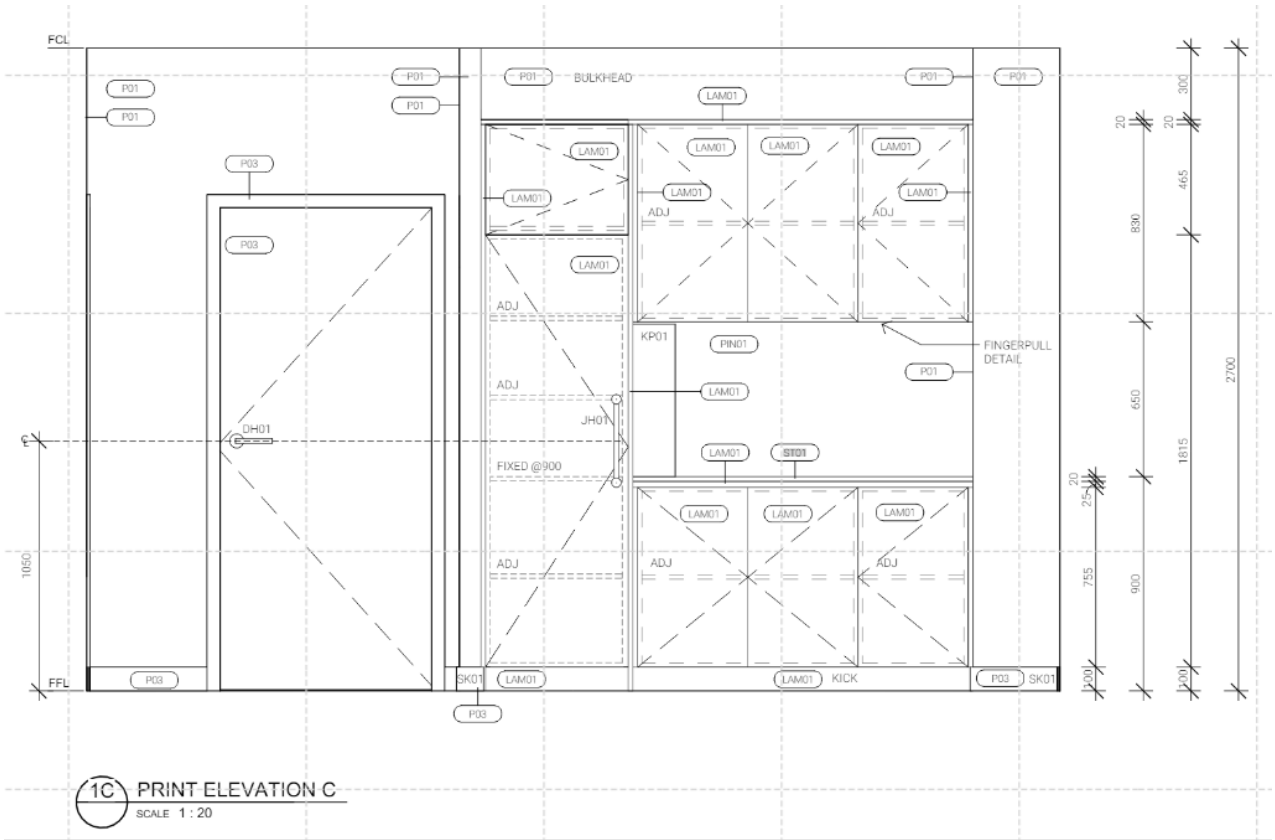
Print Name	Signature
Date	1/2/2026 9:01 AM

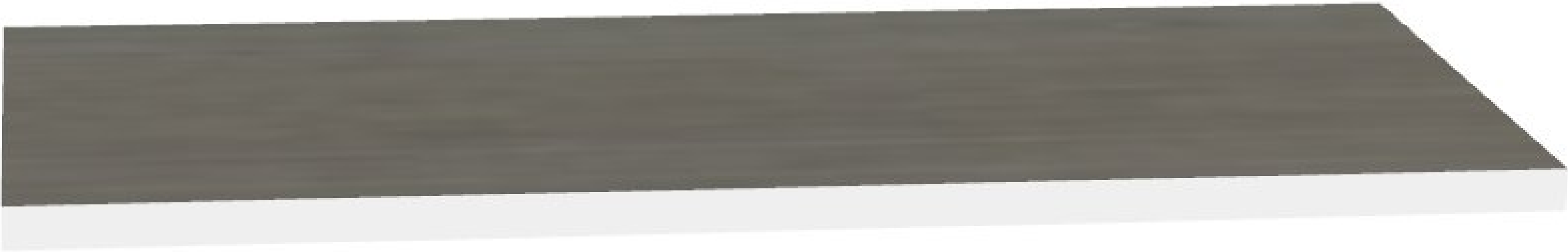
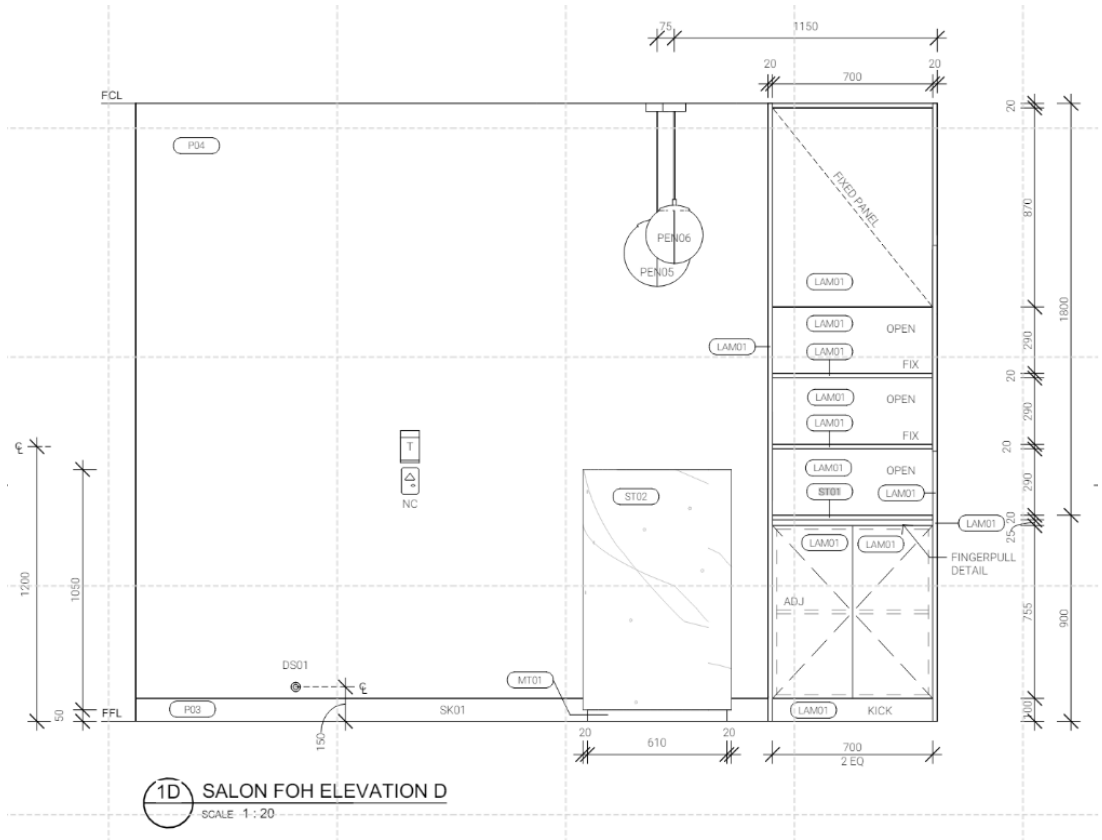


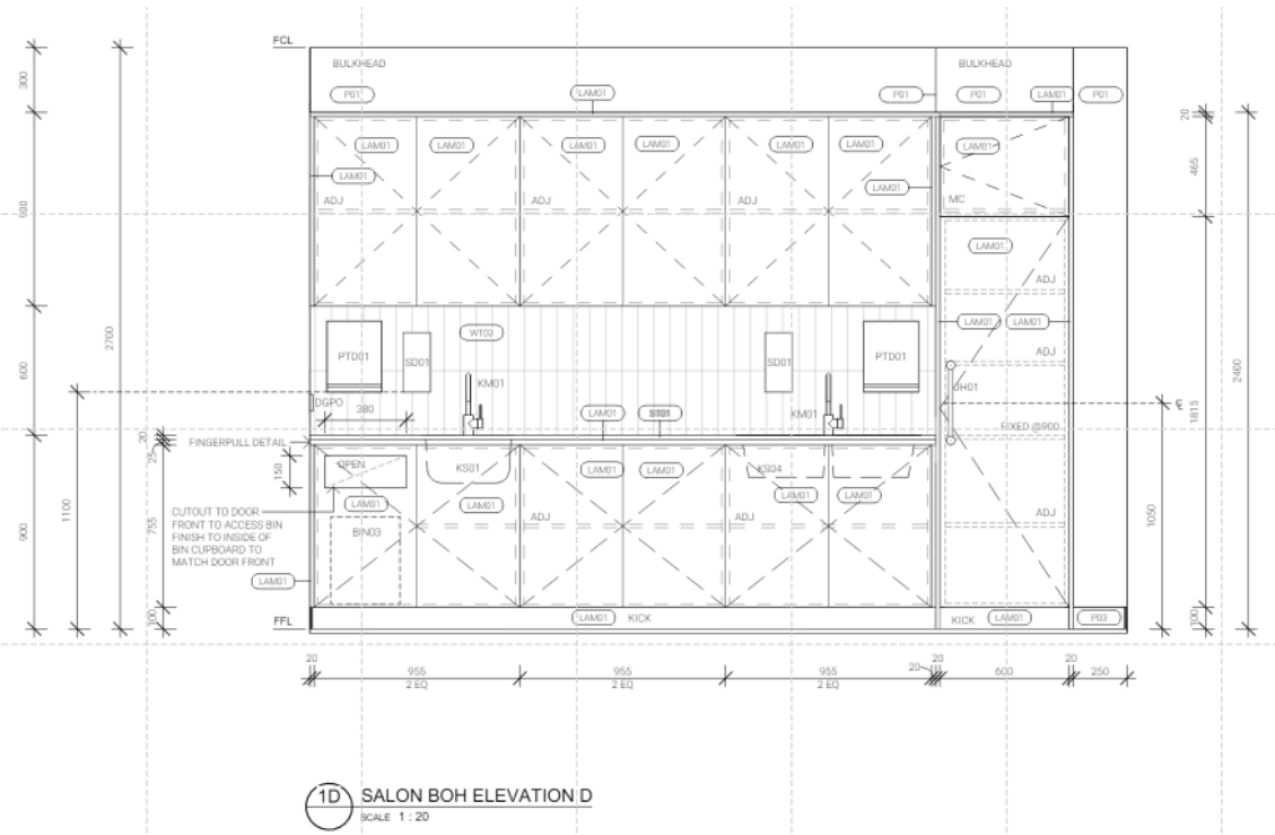


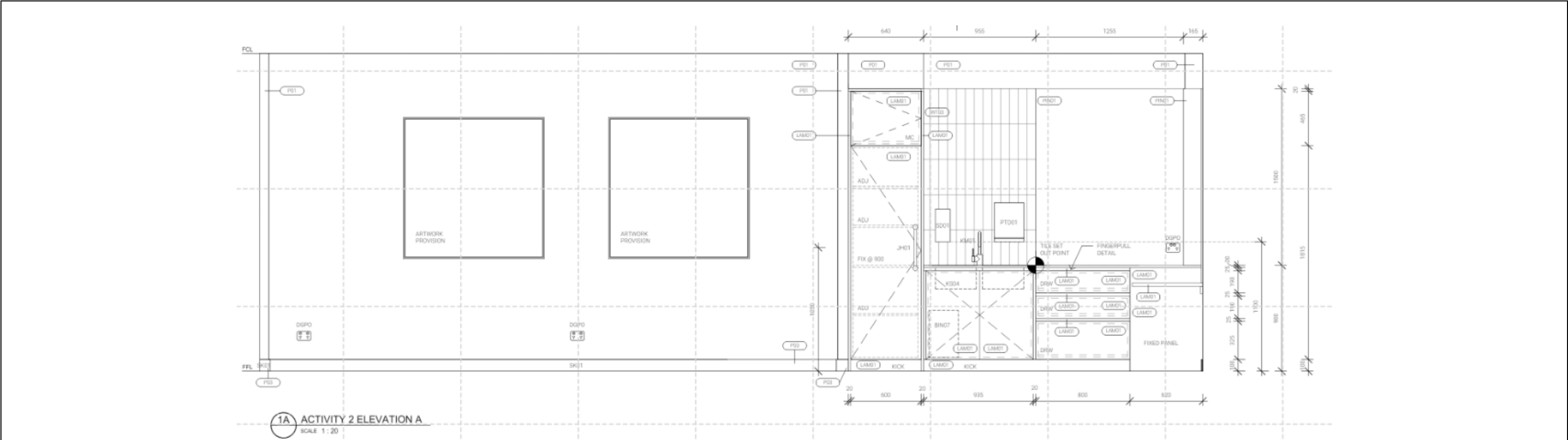


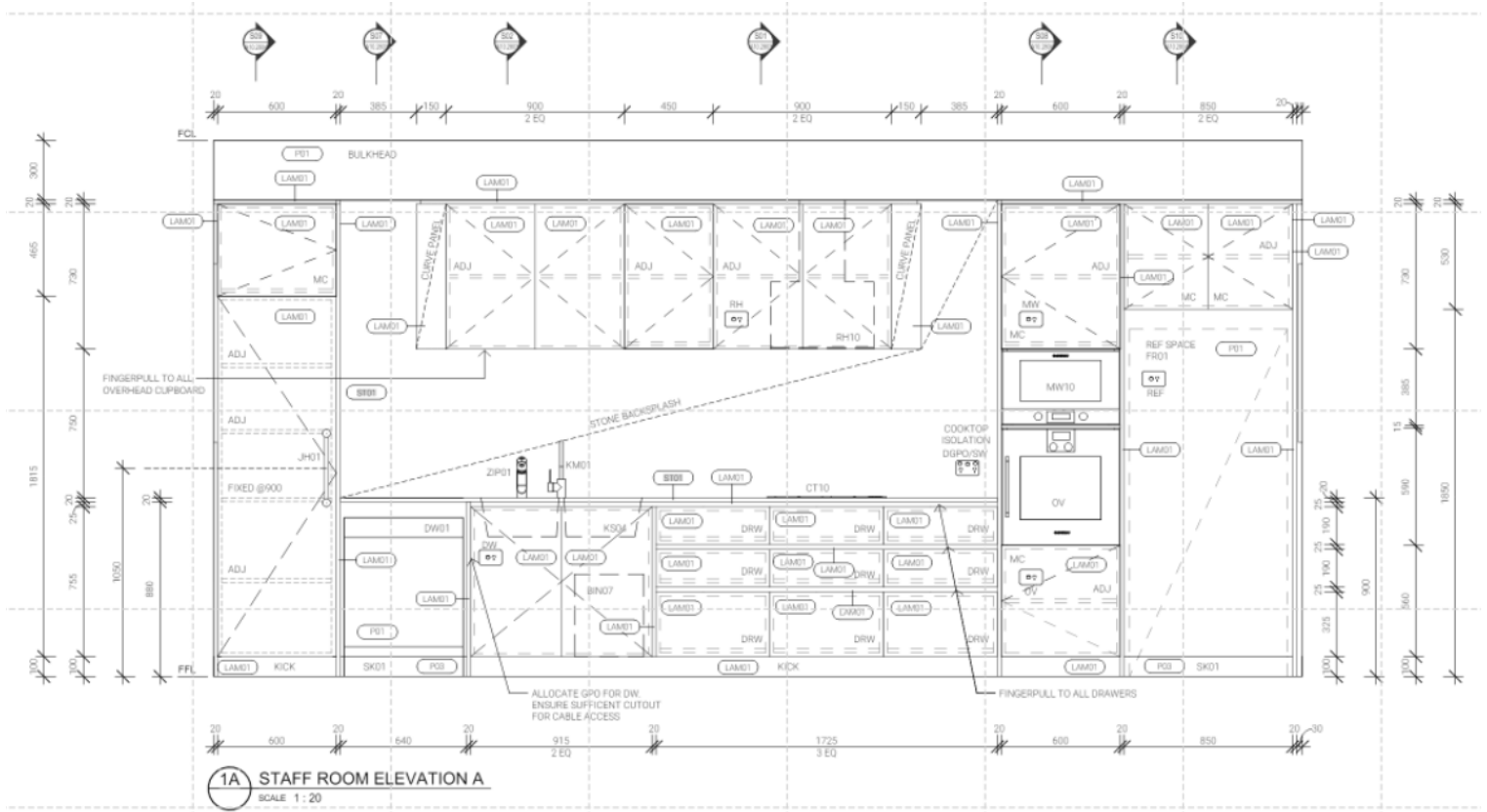


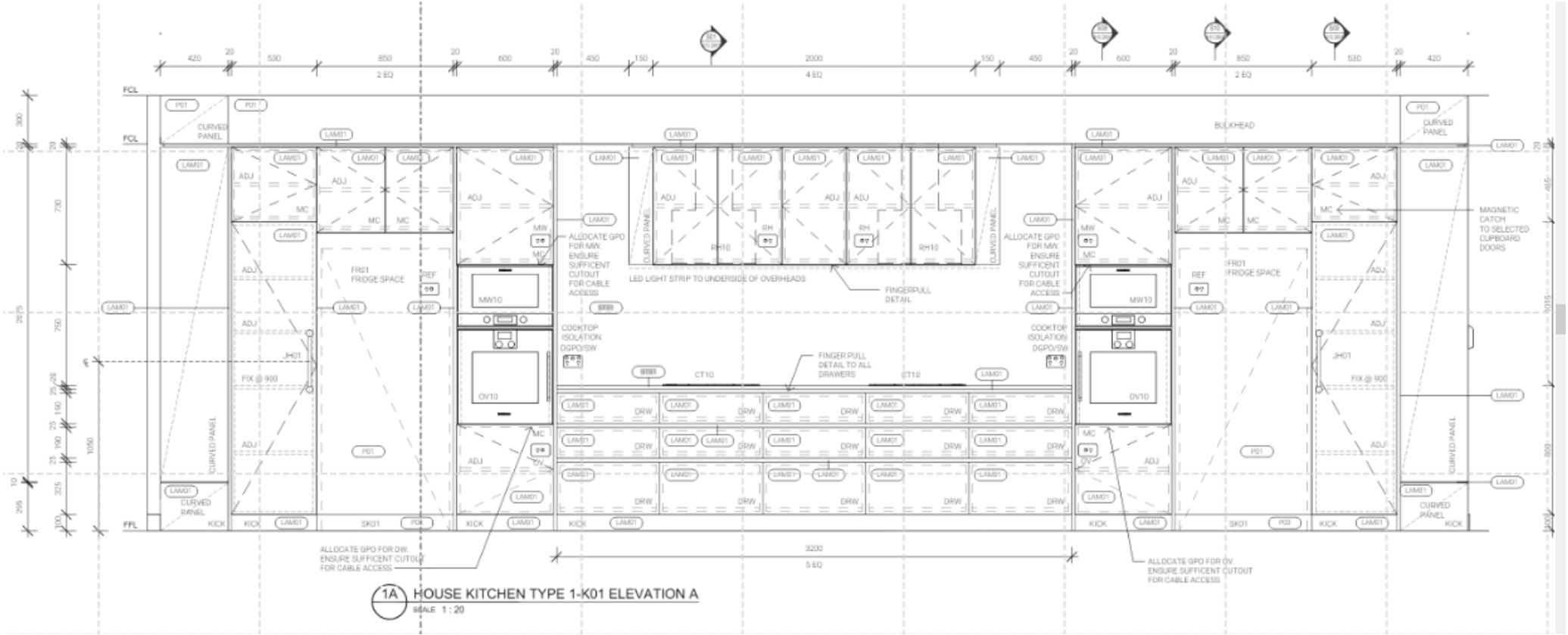




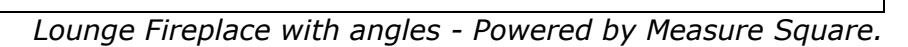


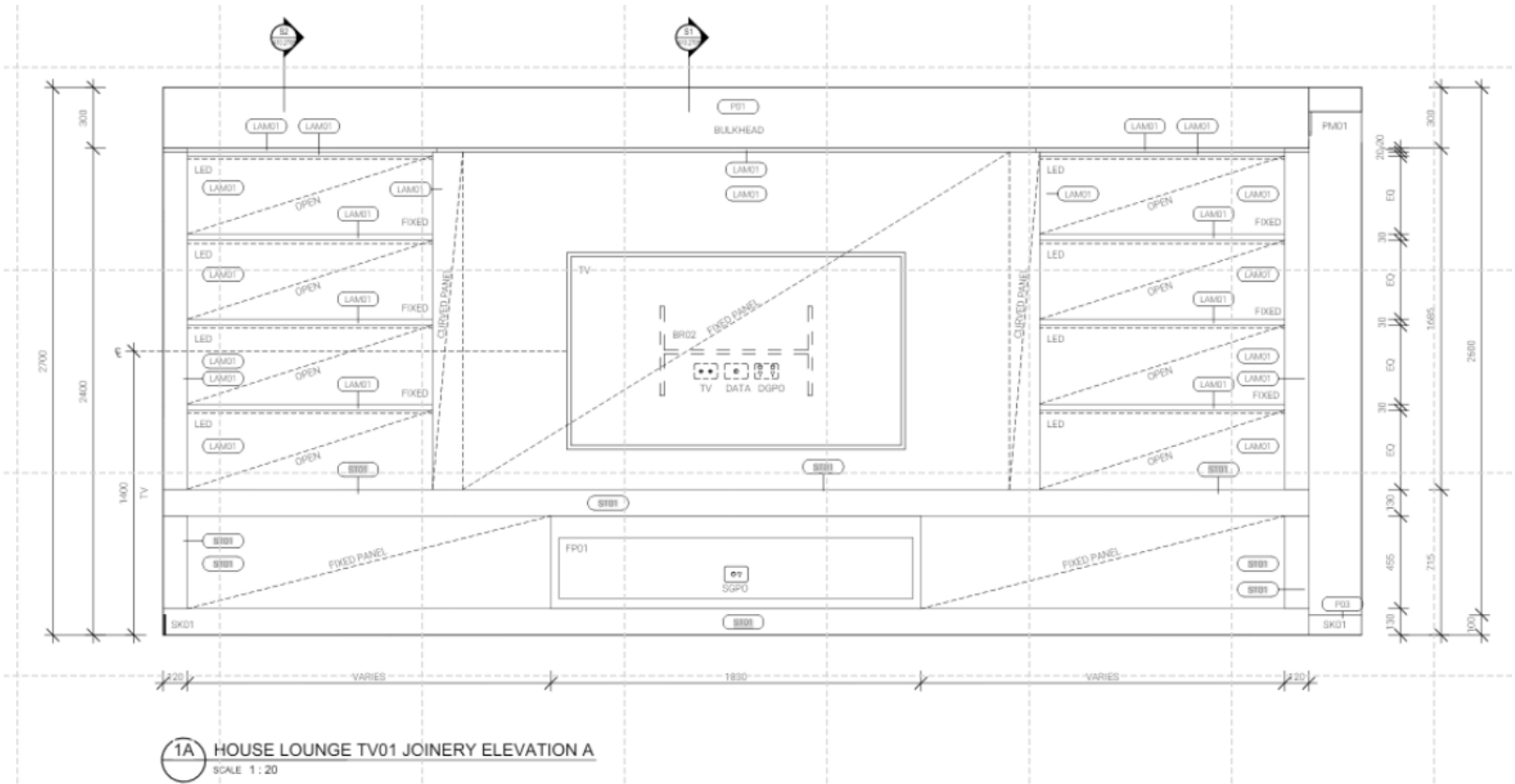


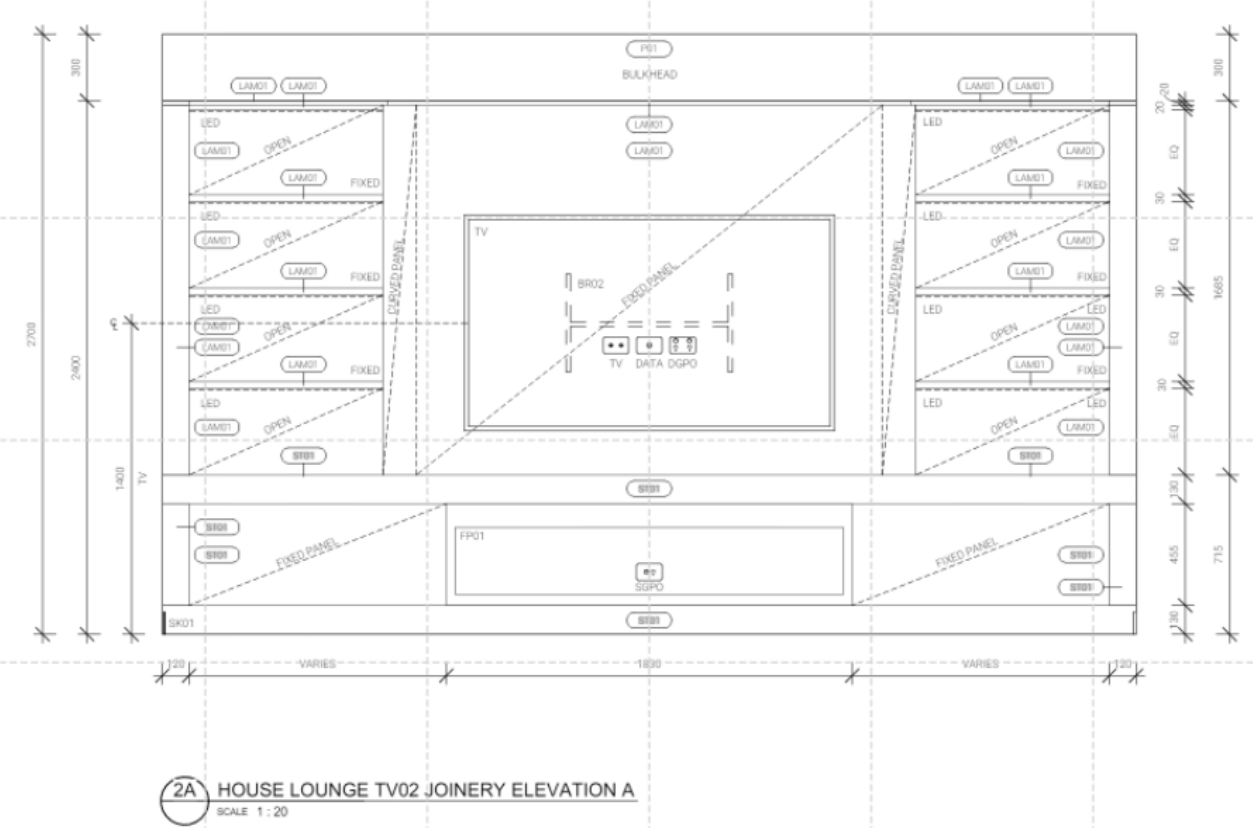


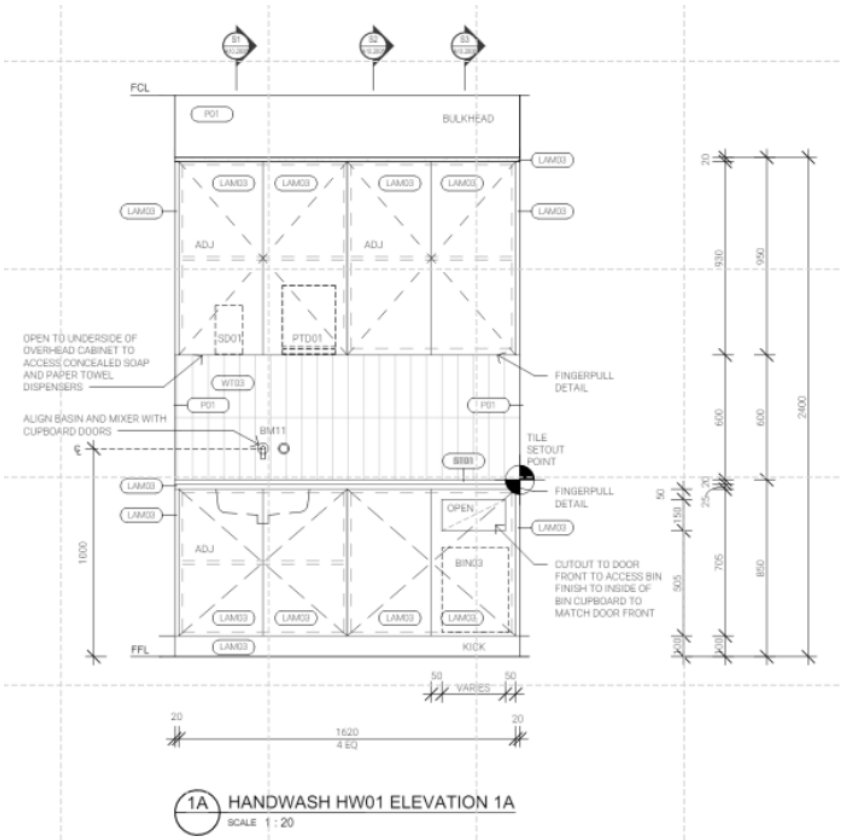


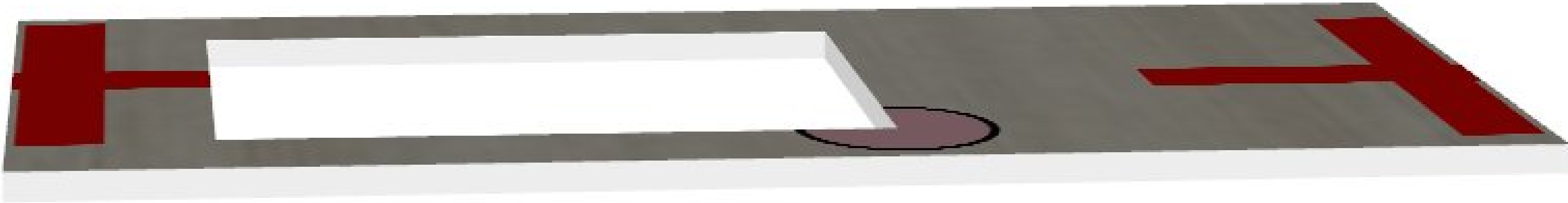
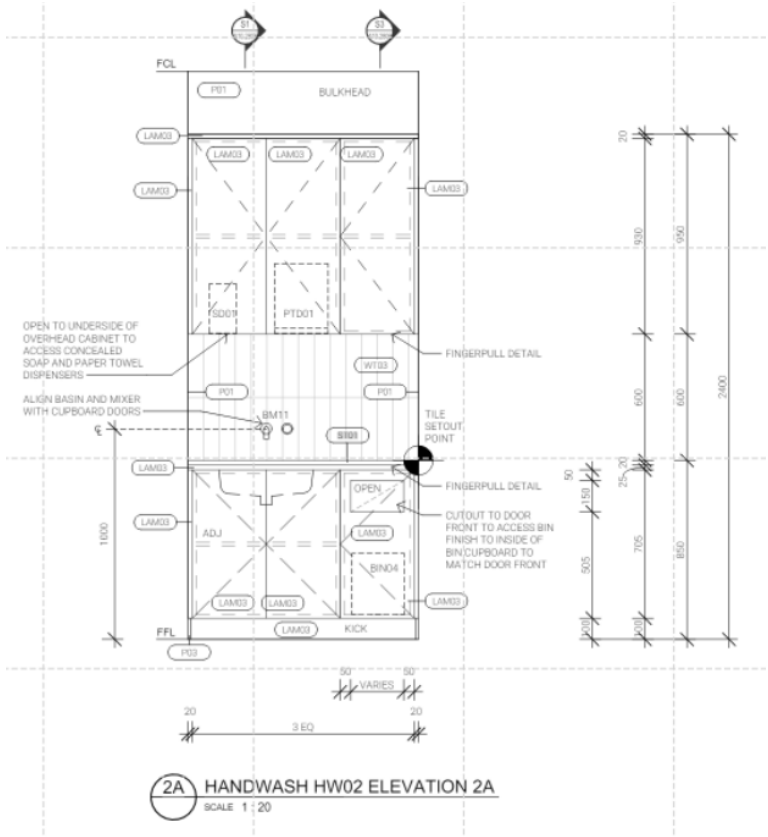


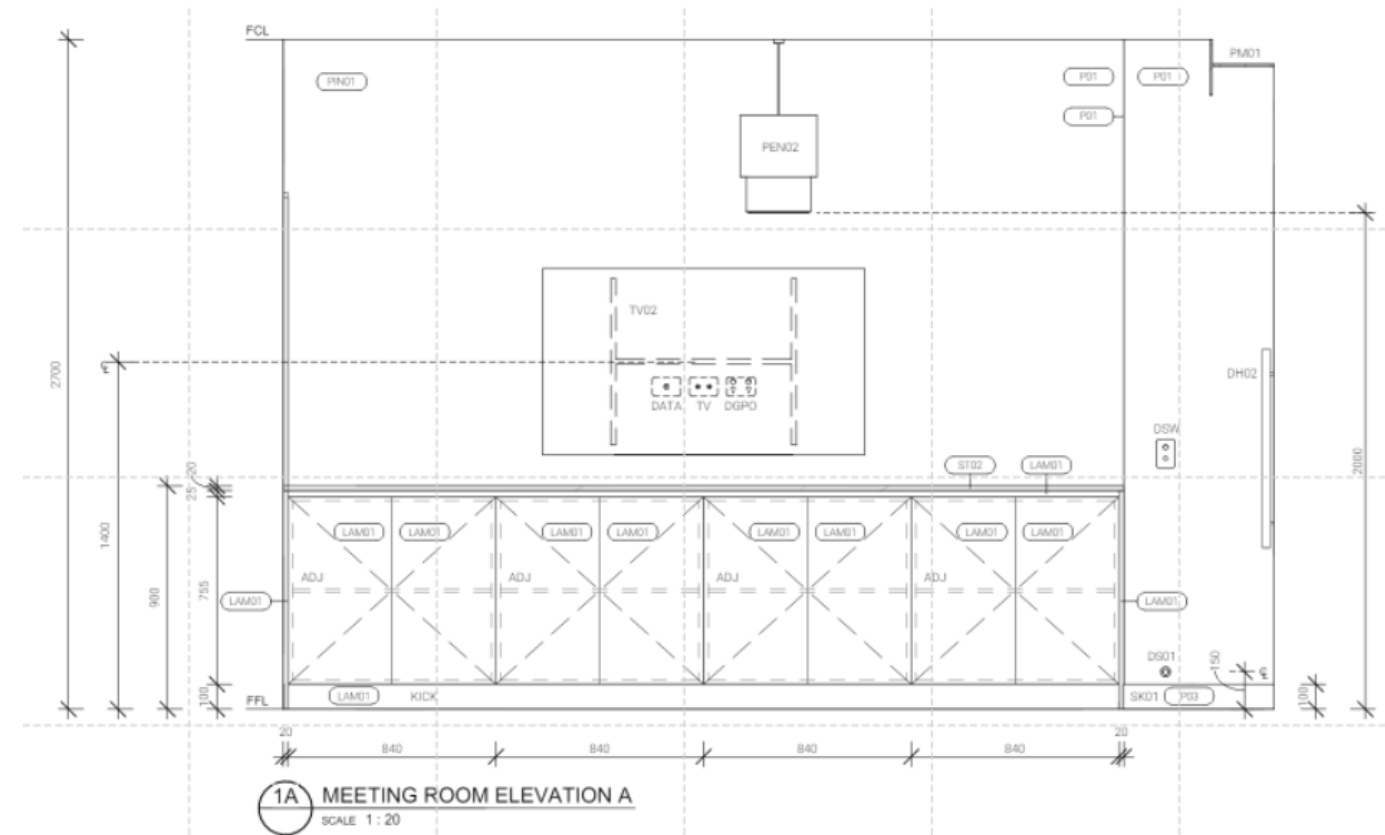


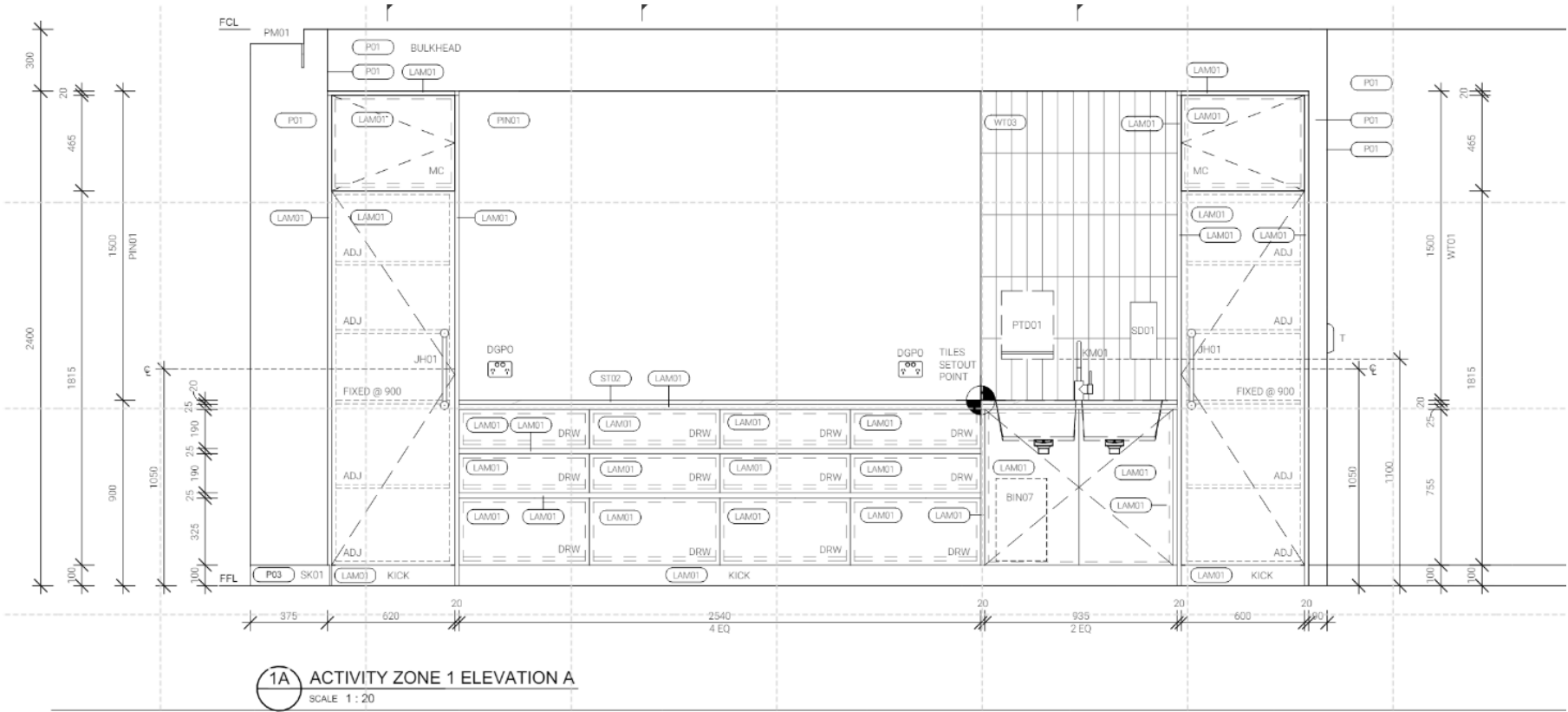


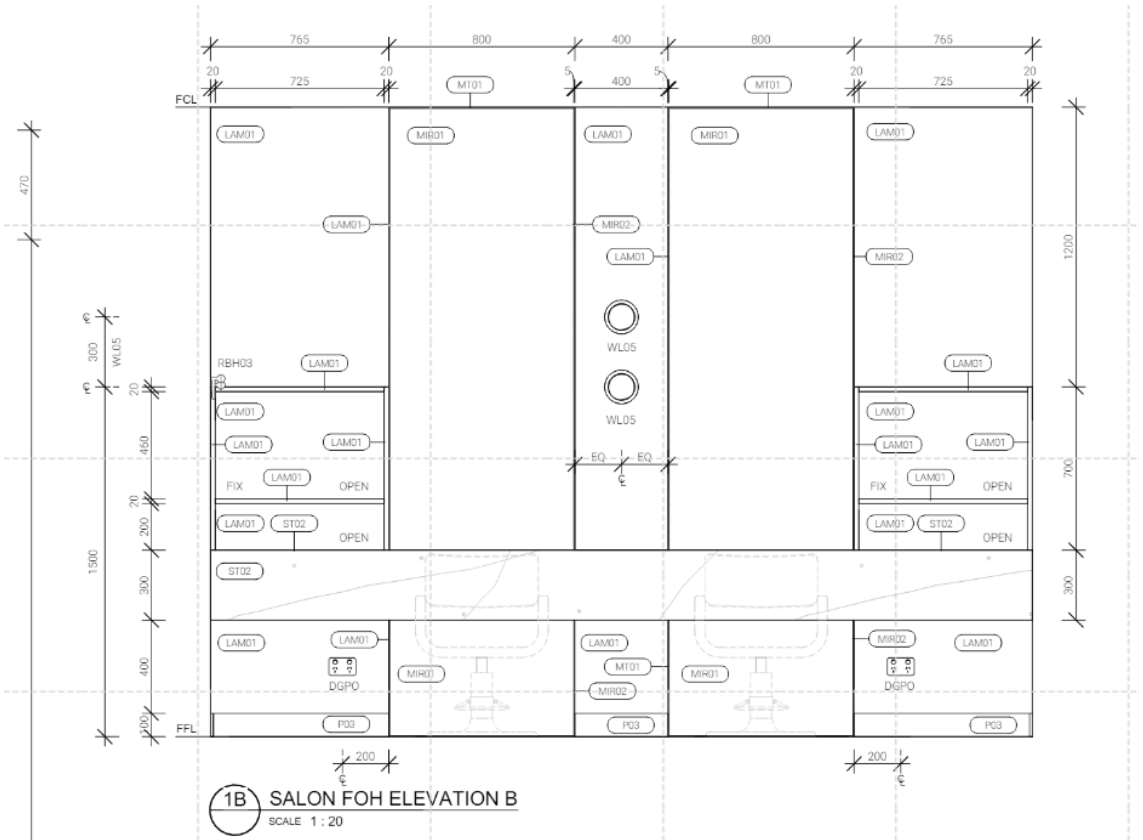


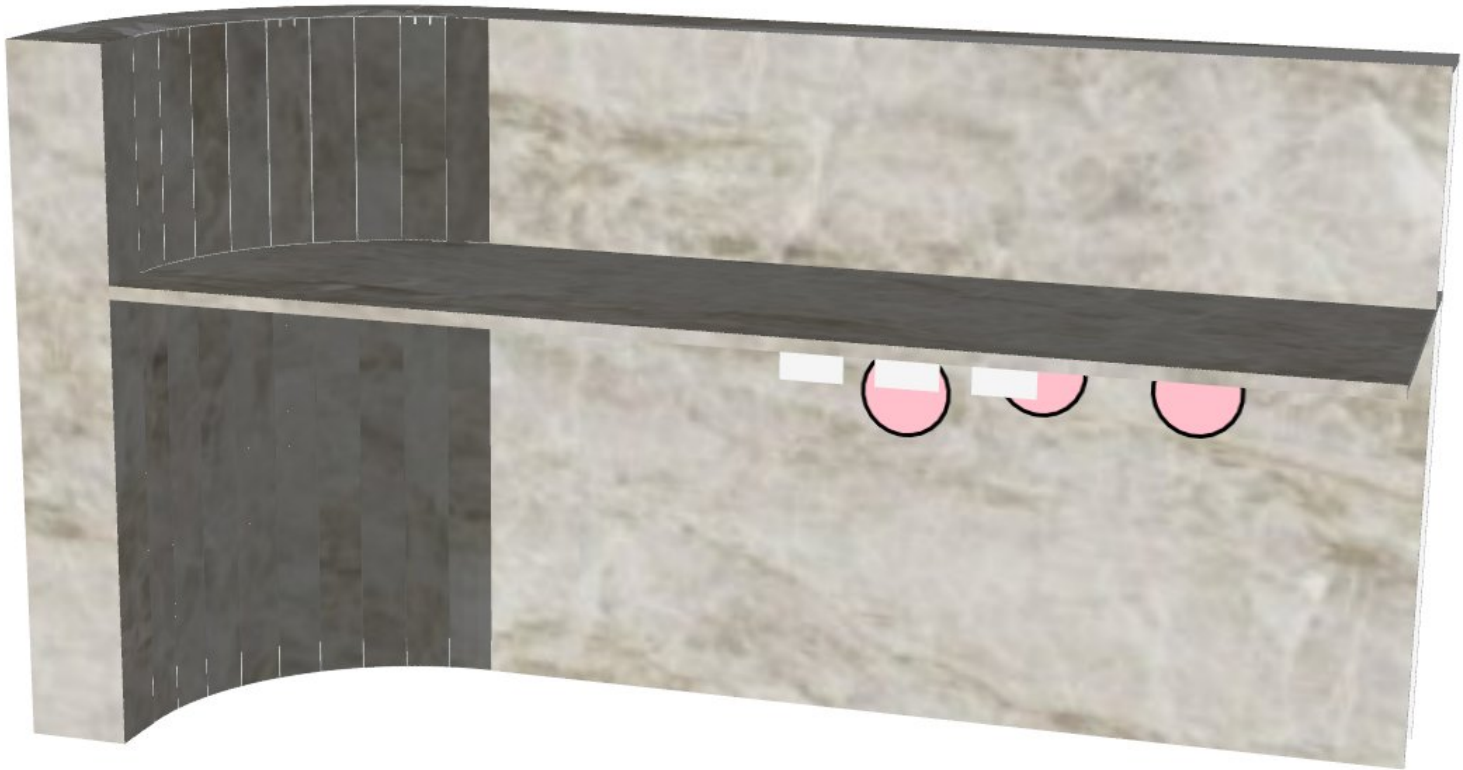
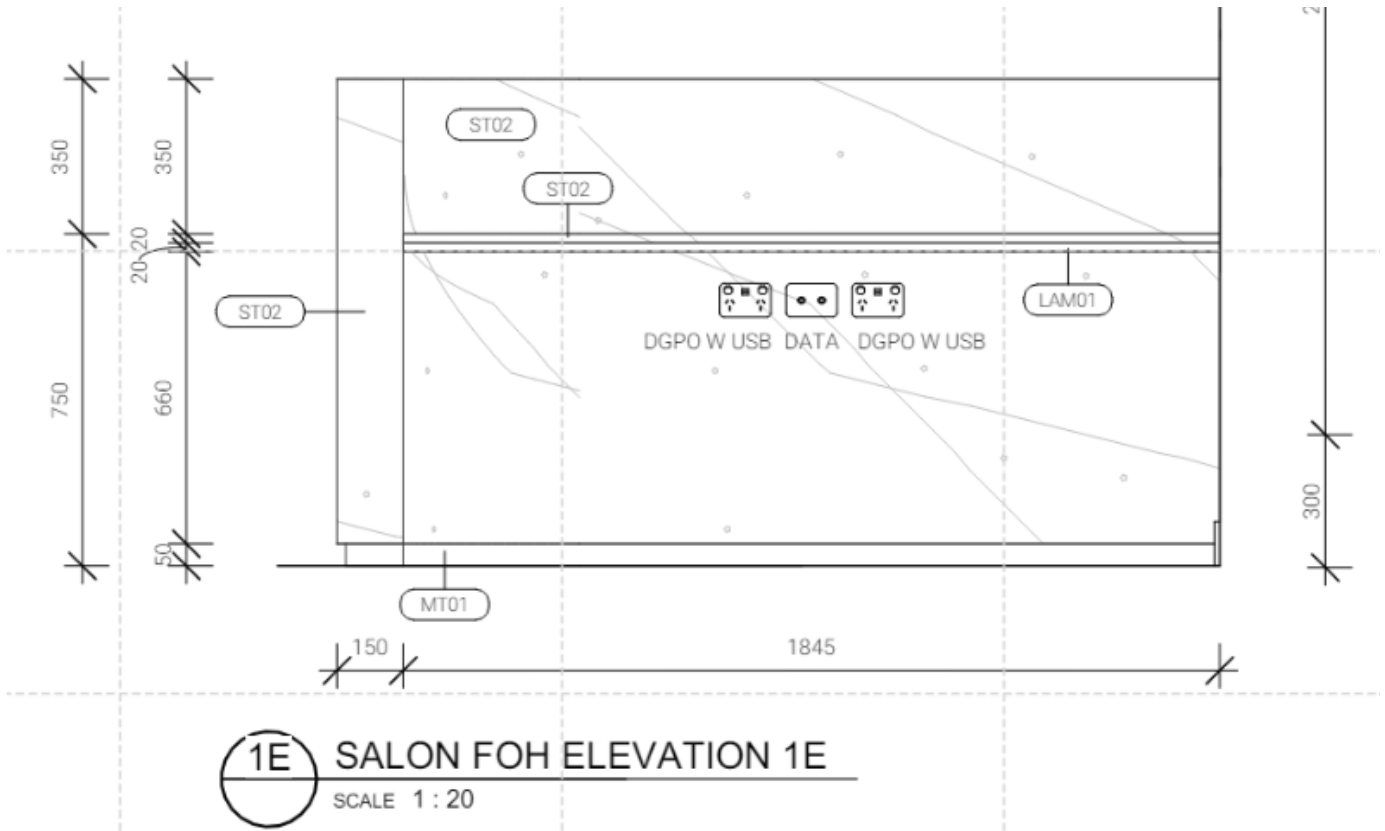


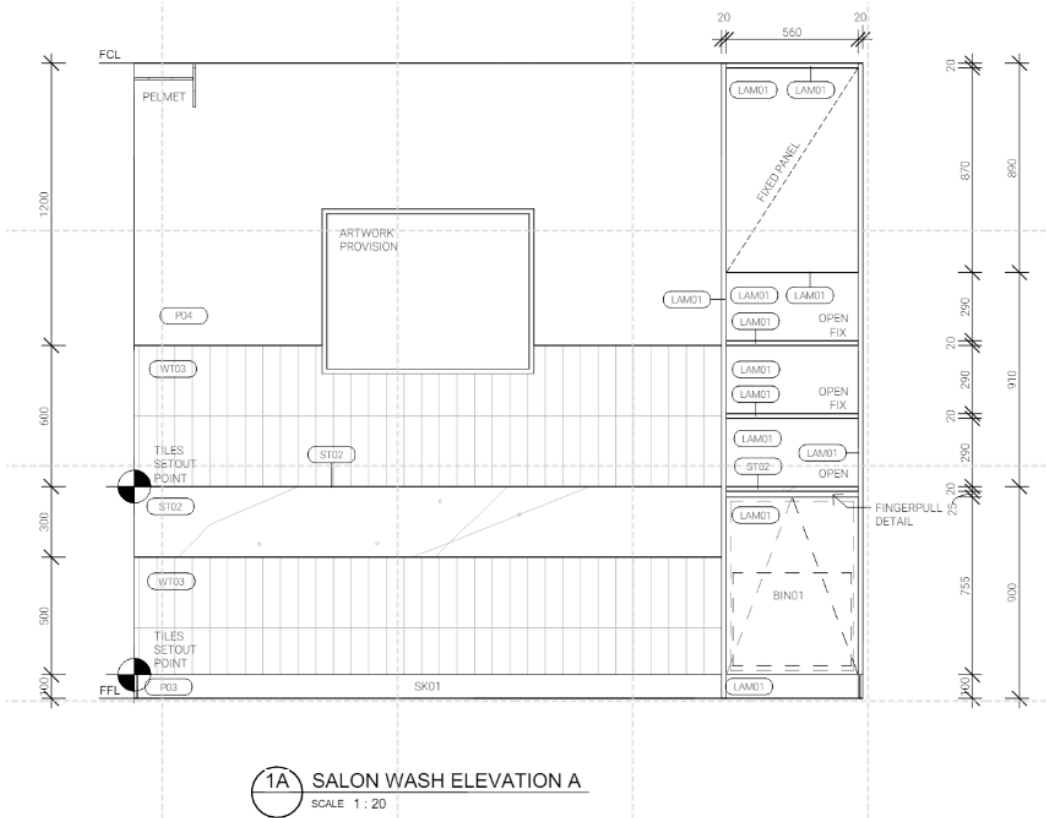


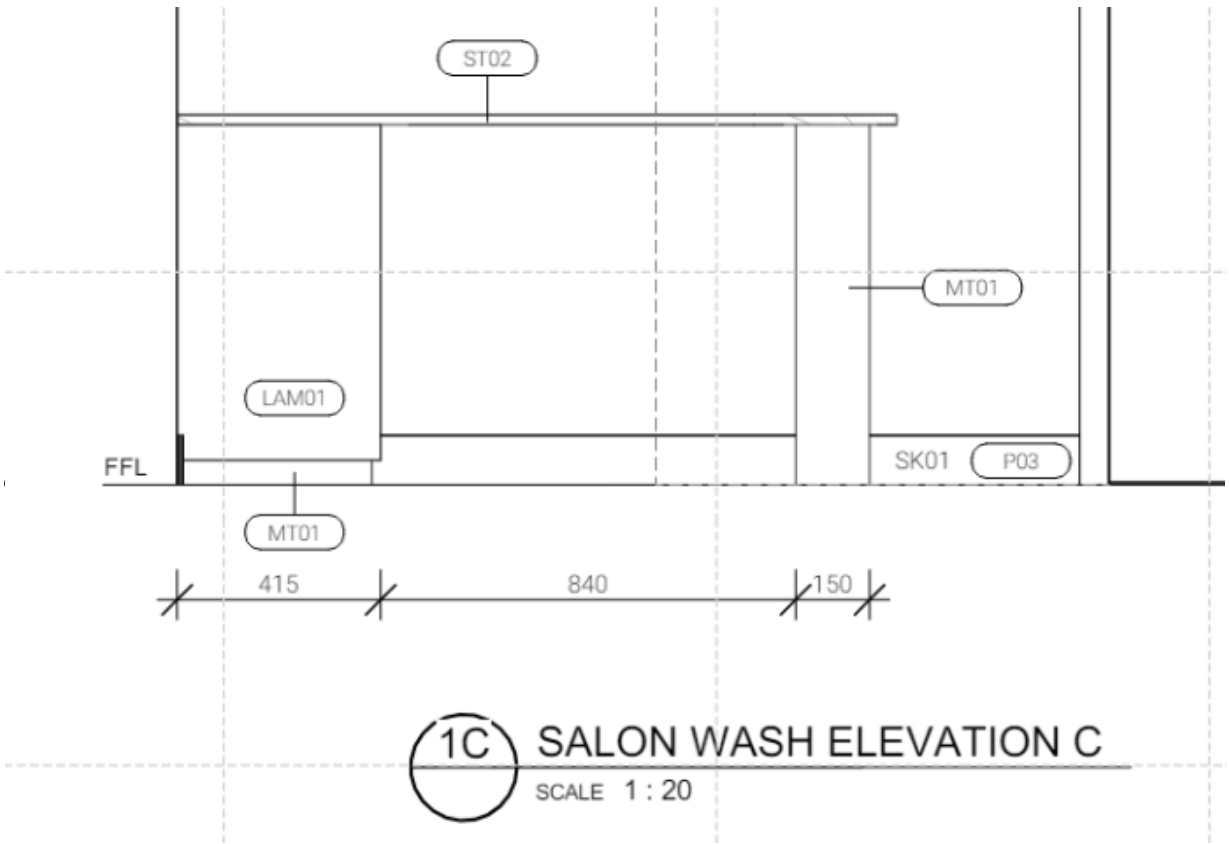


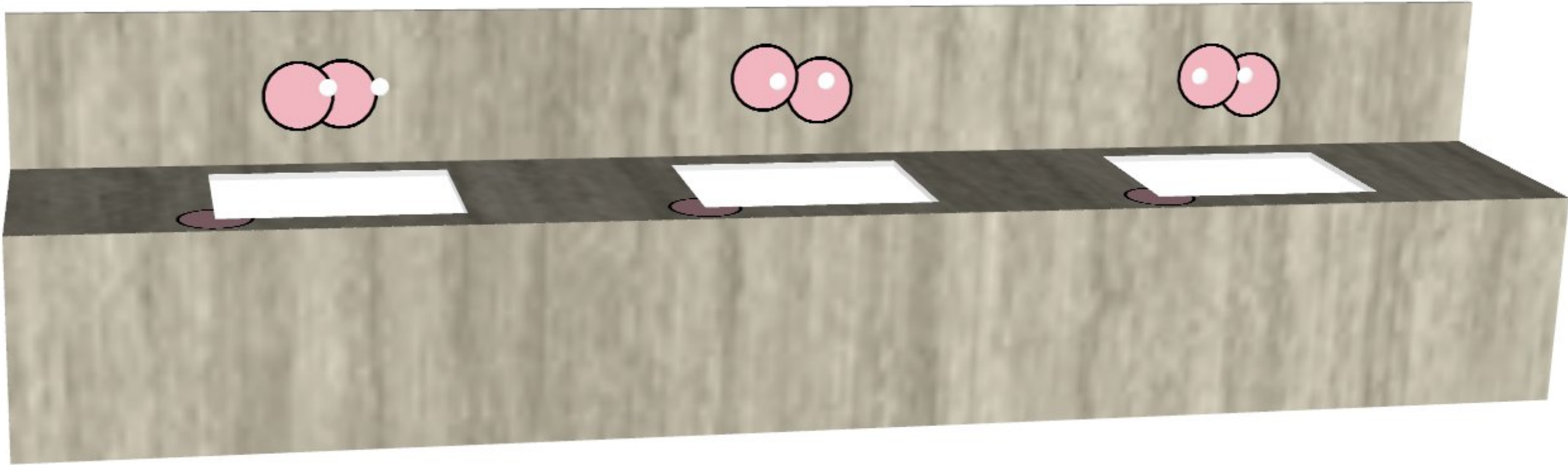
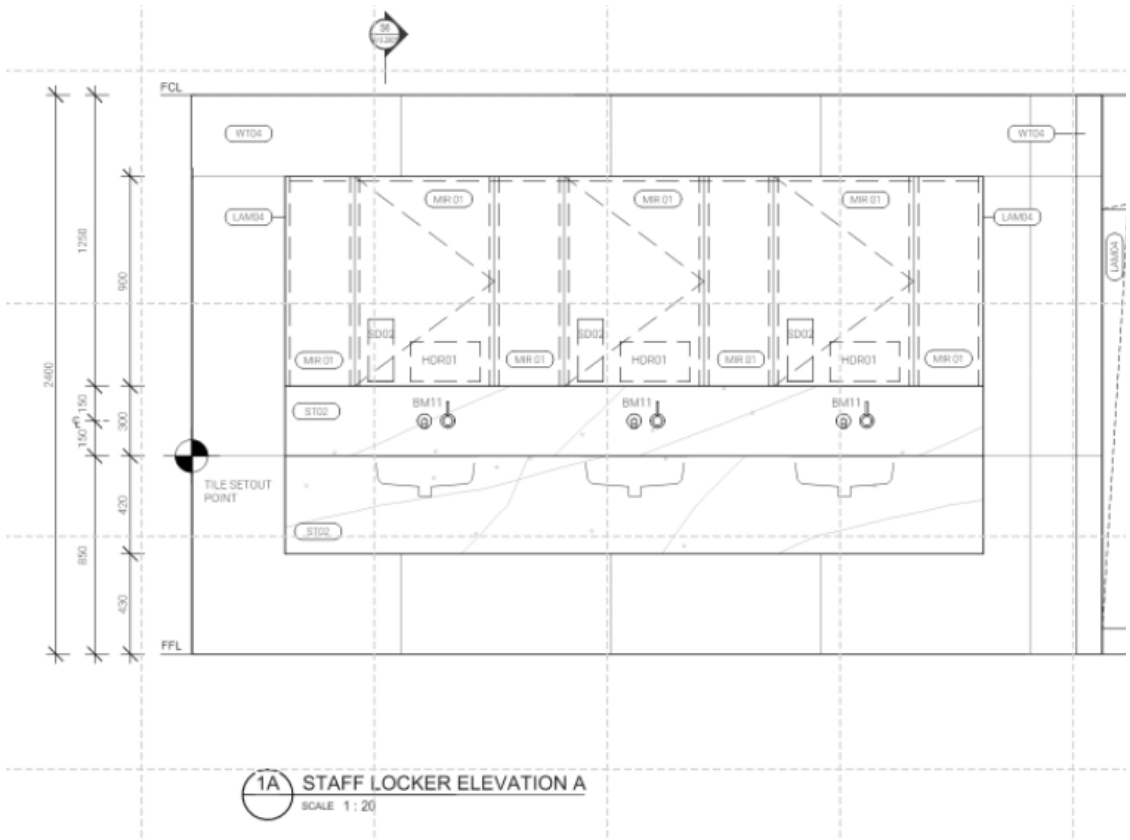


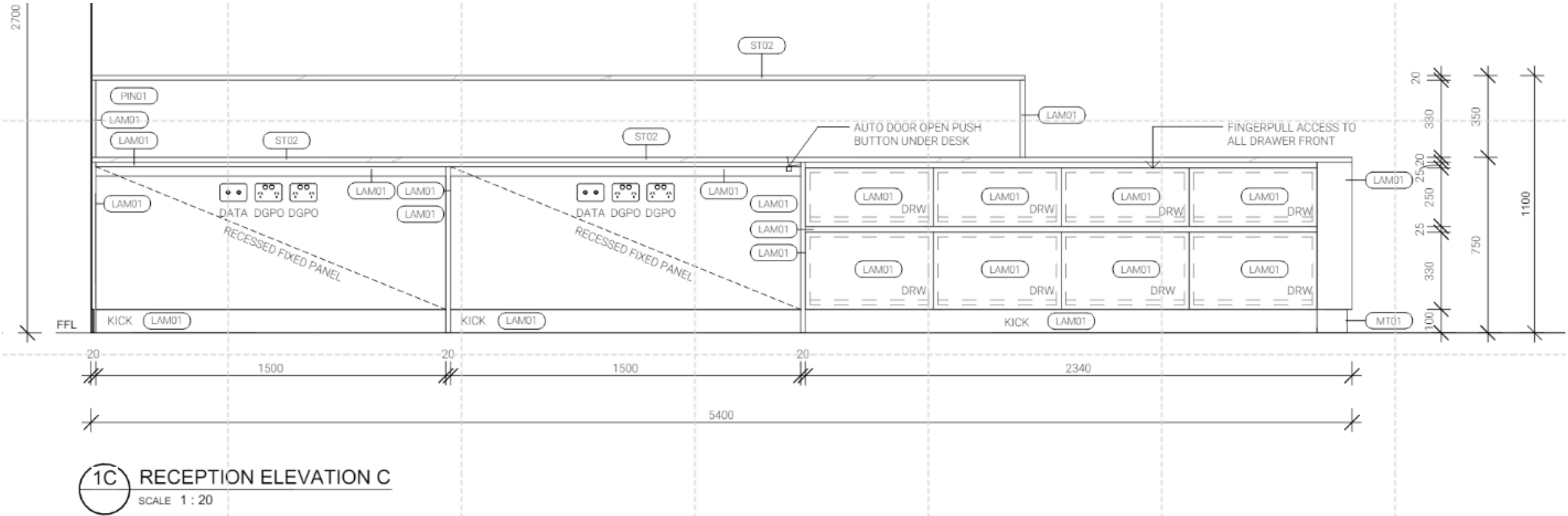


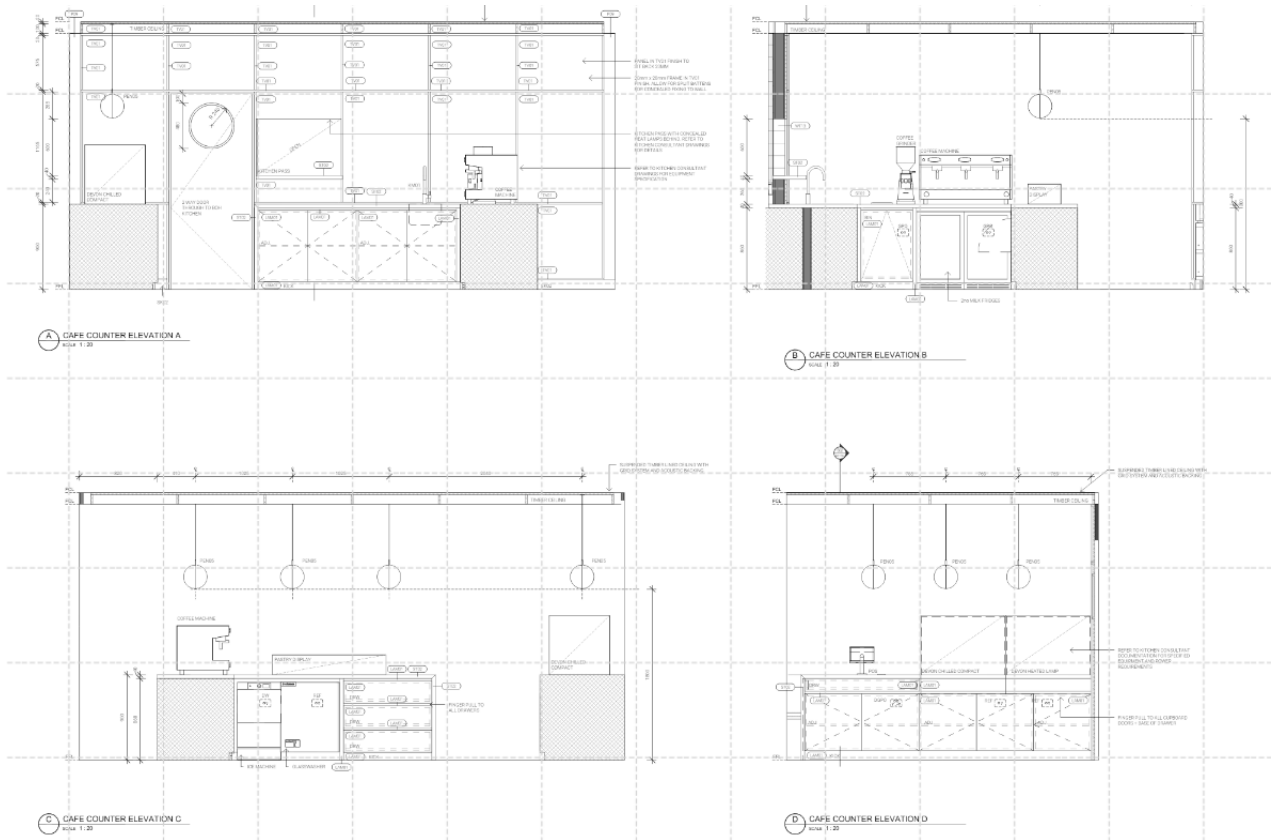


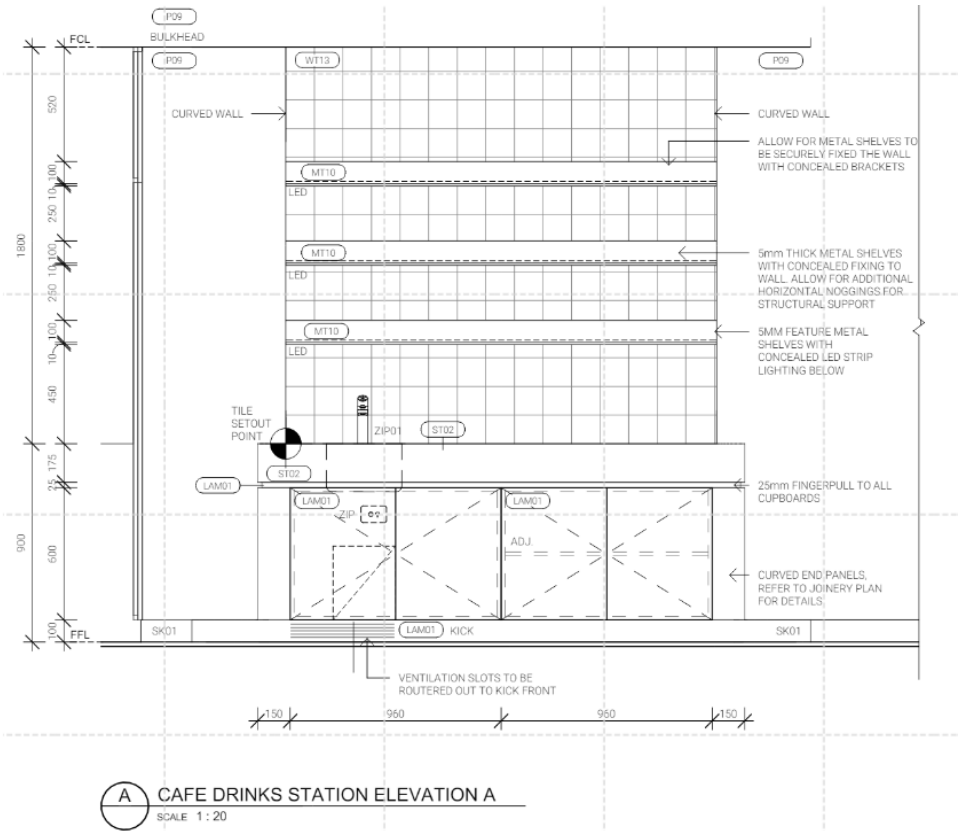


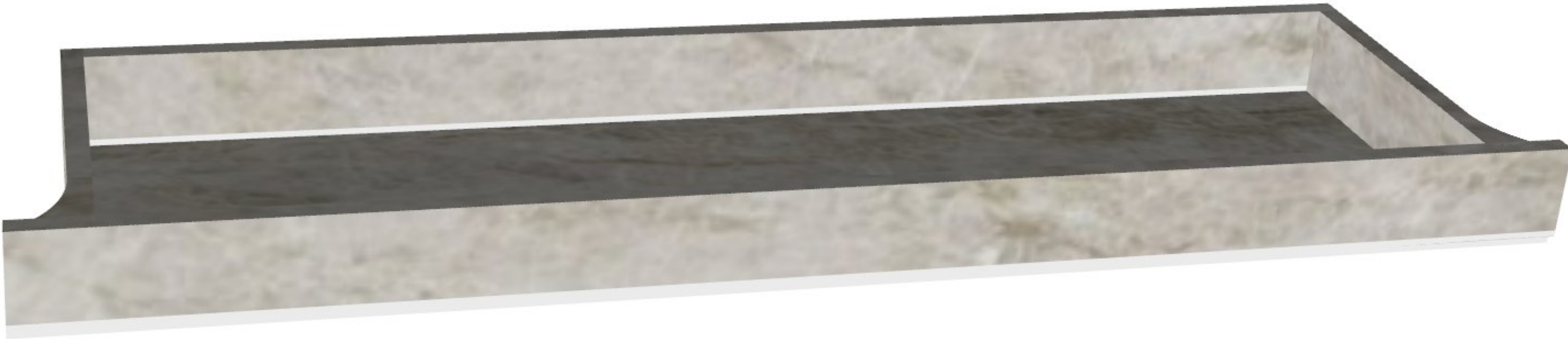
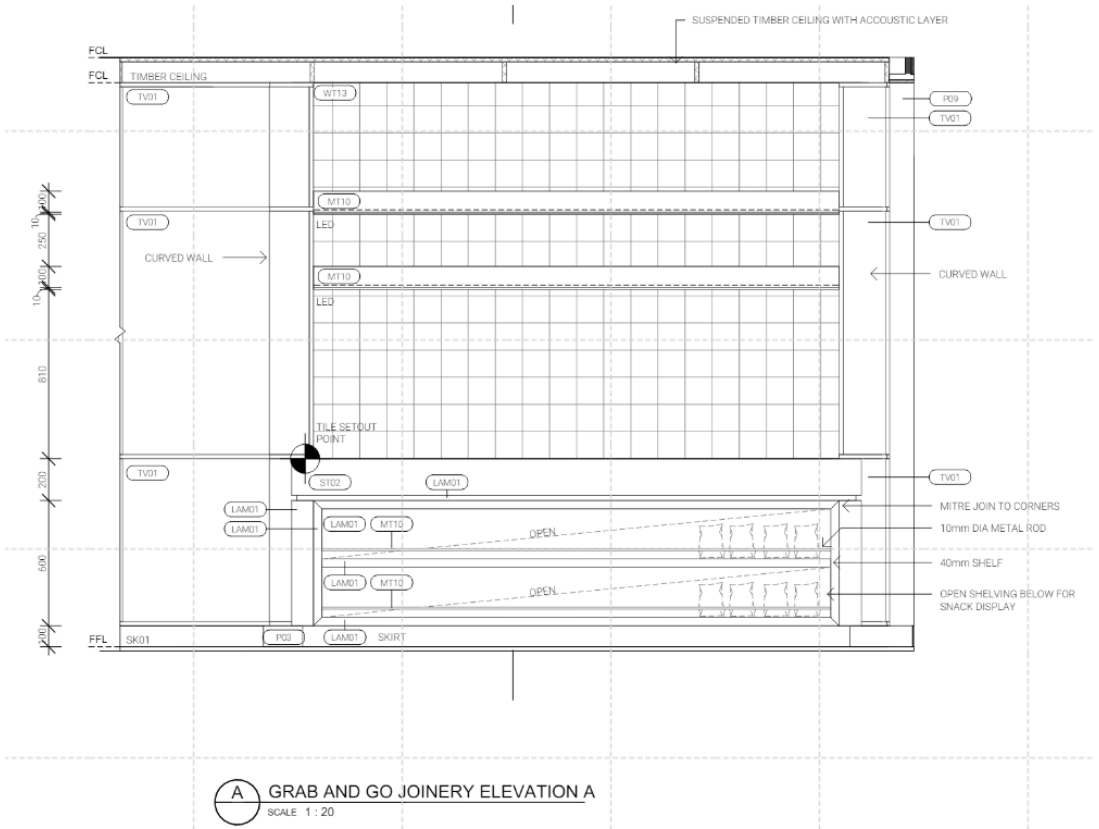


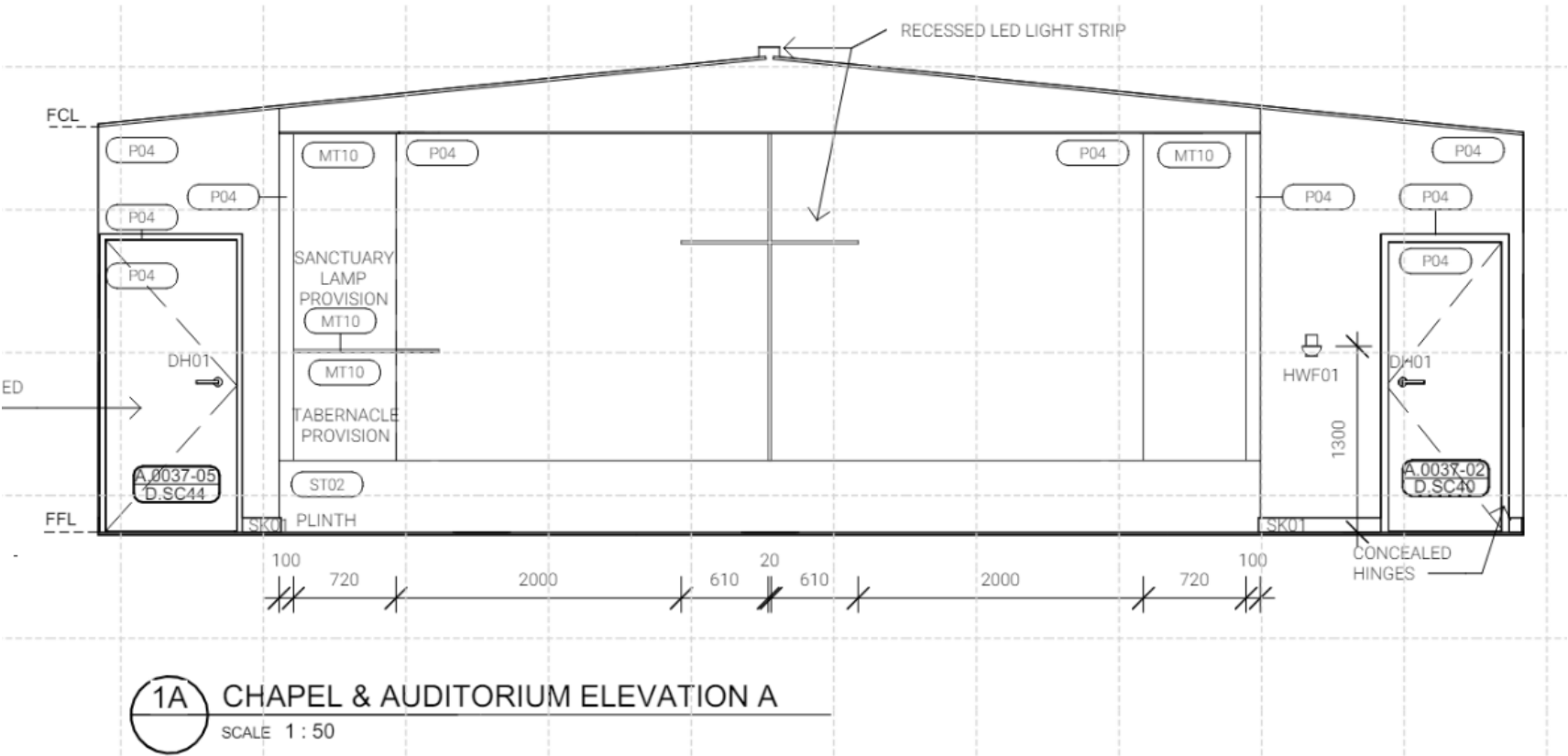


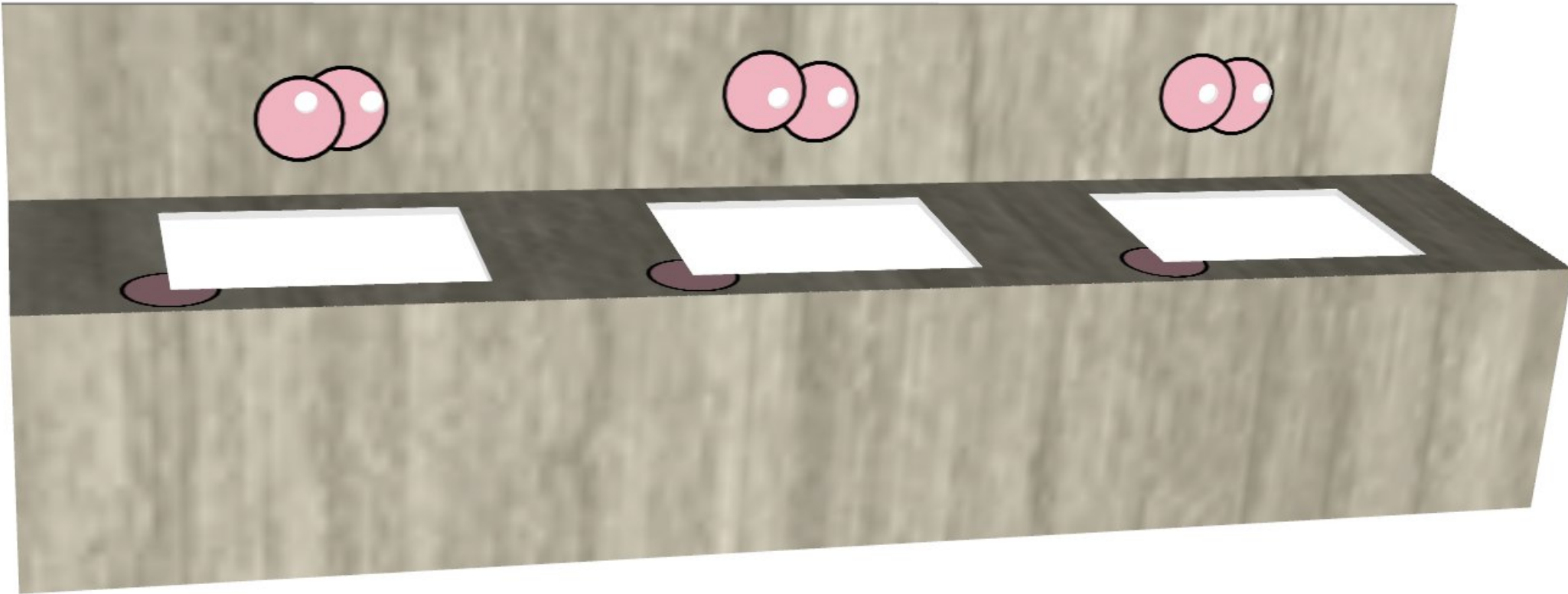
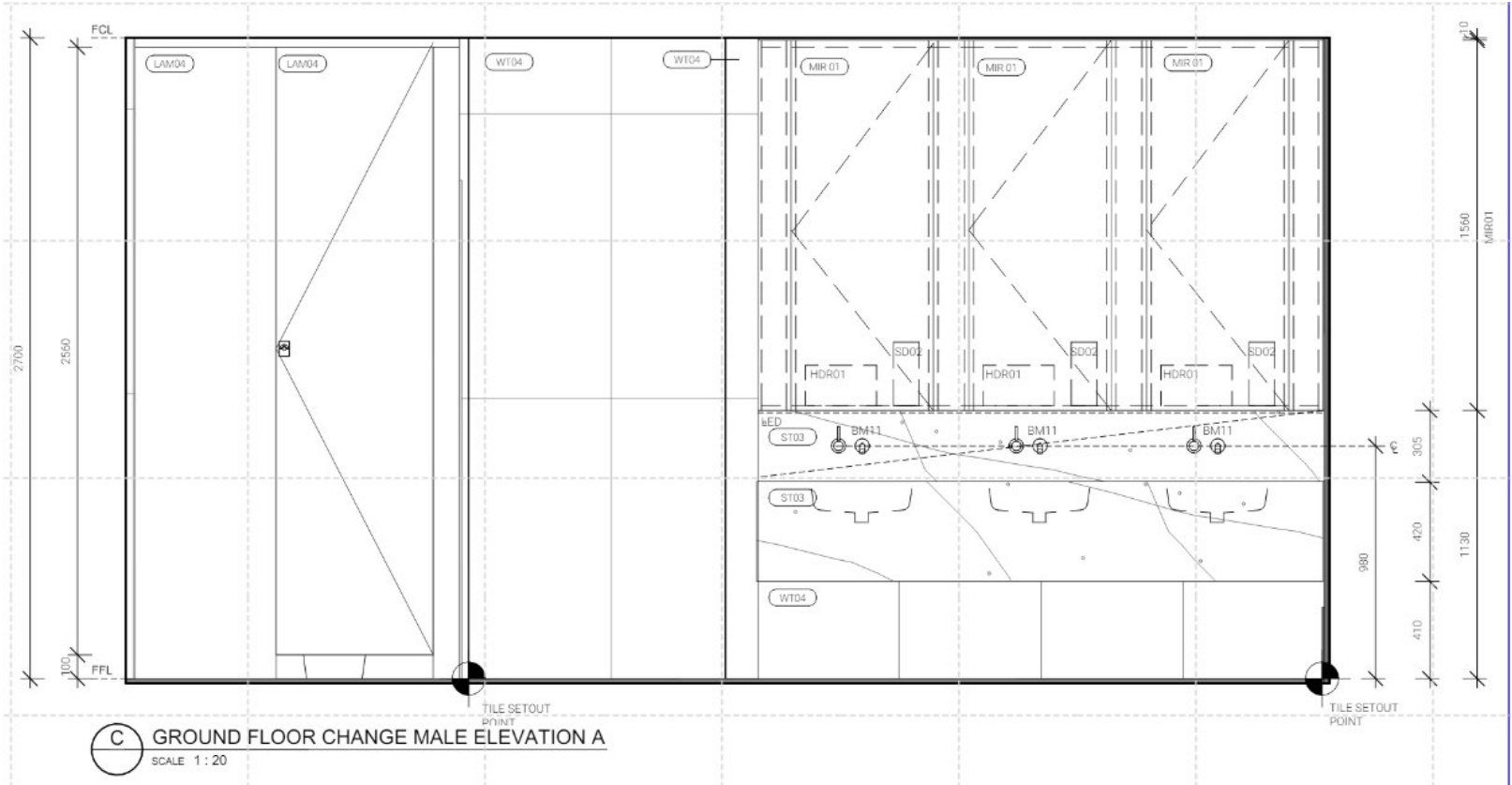


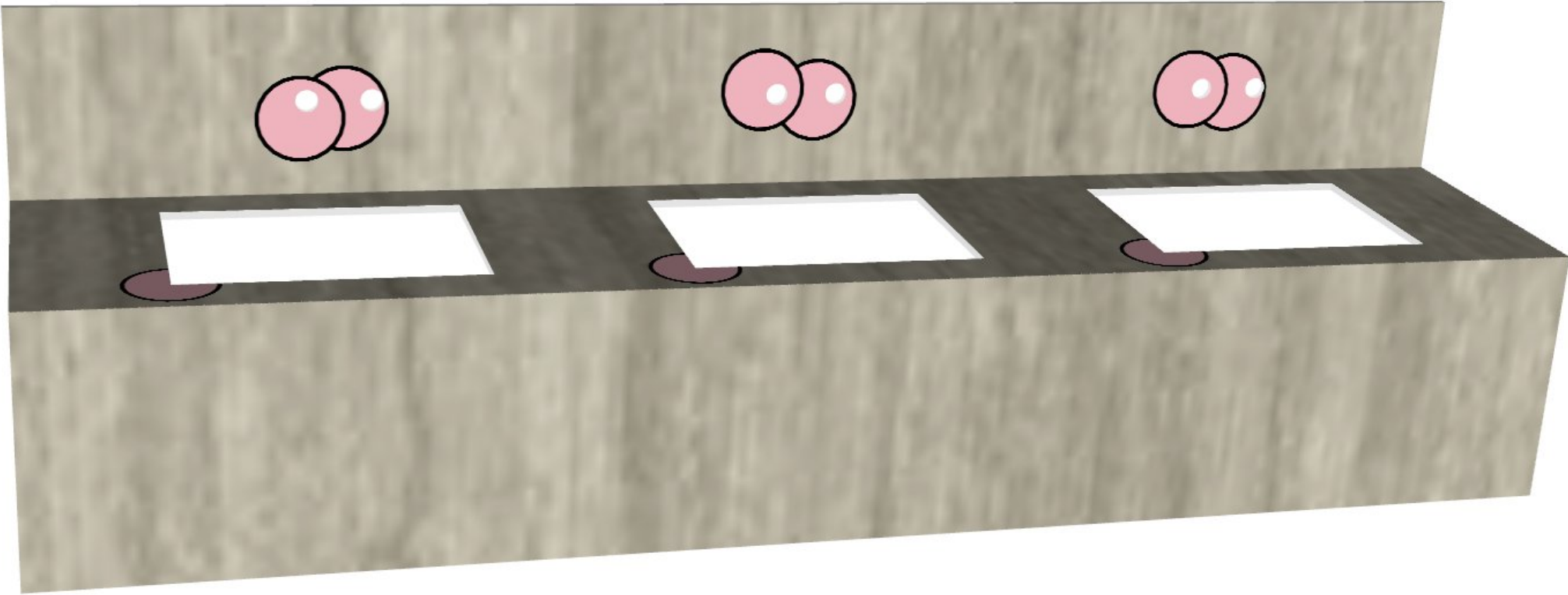
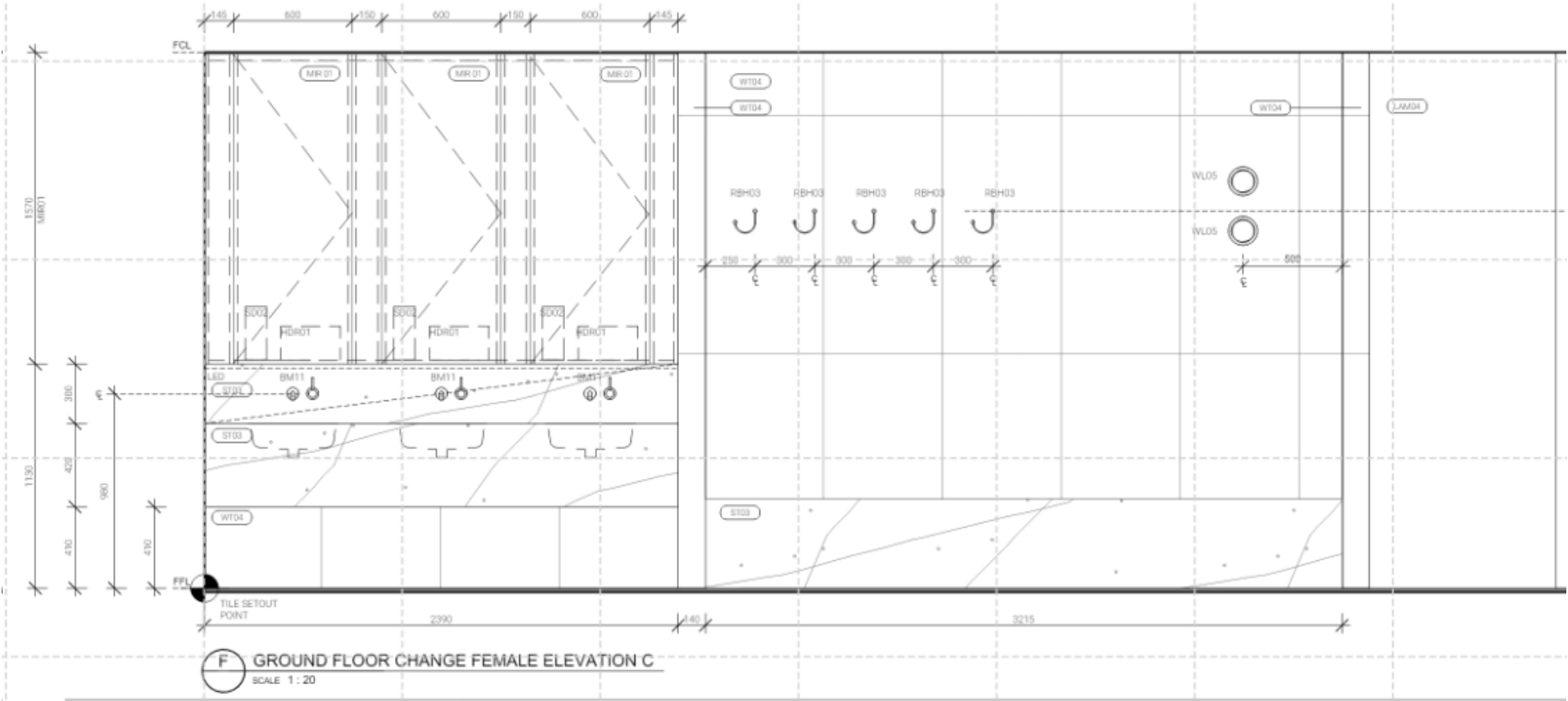


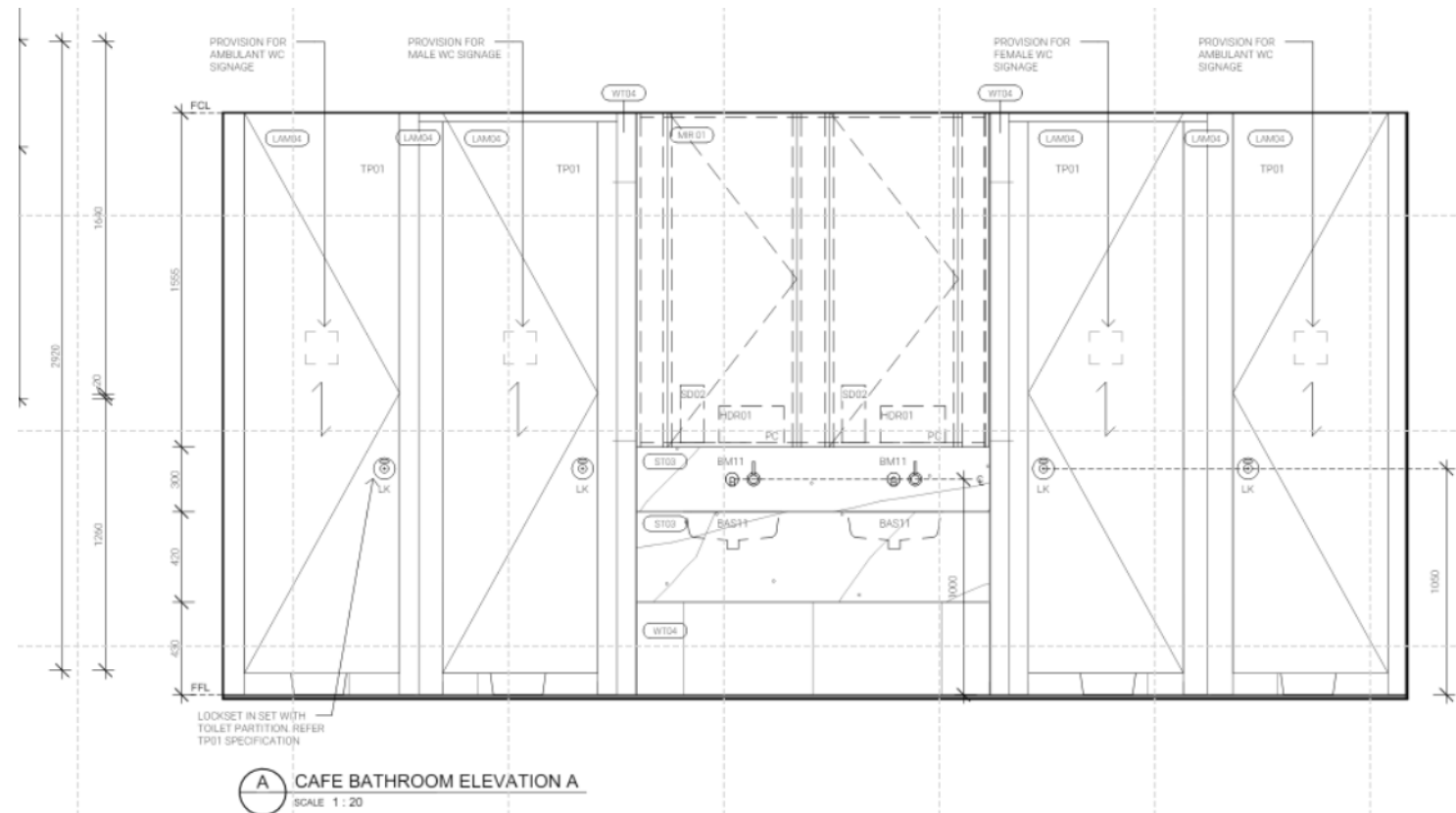


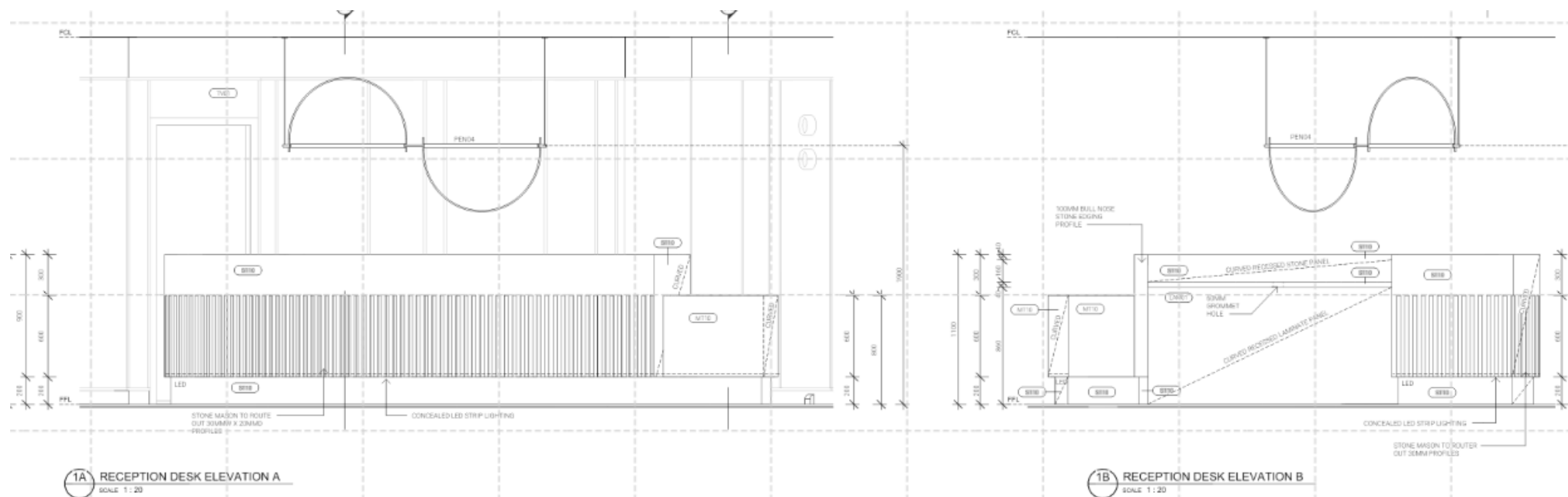


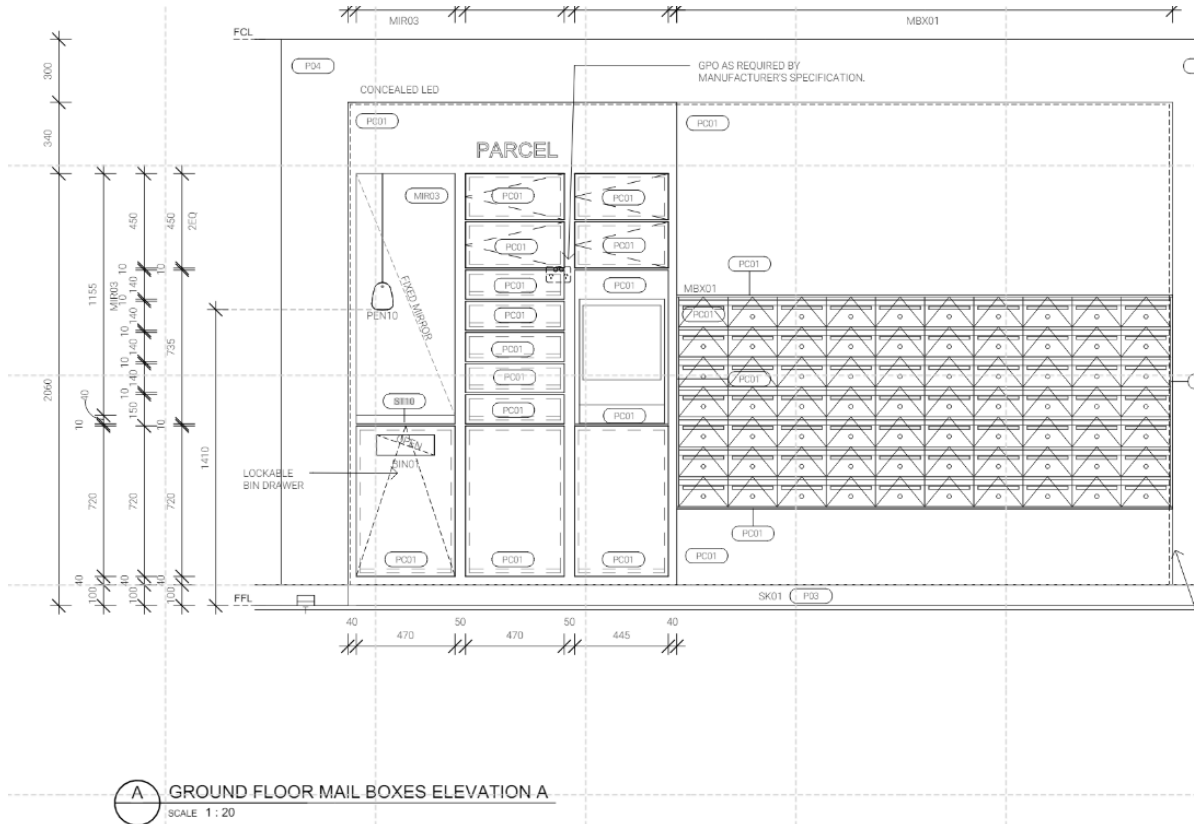
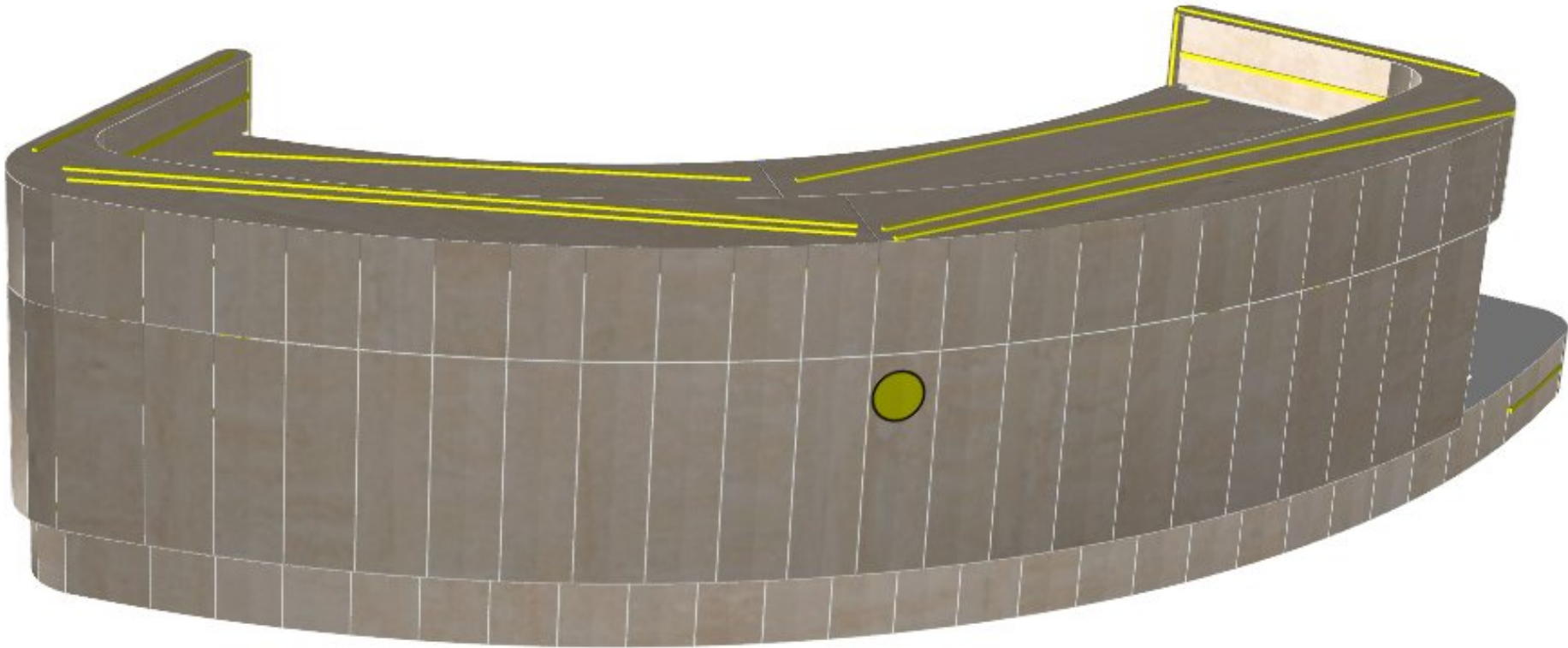


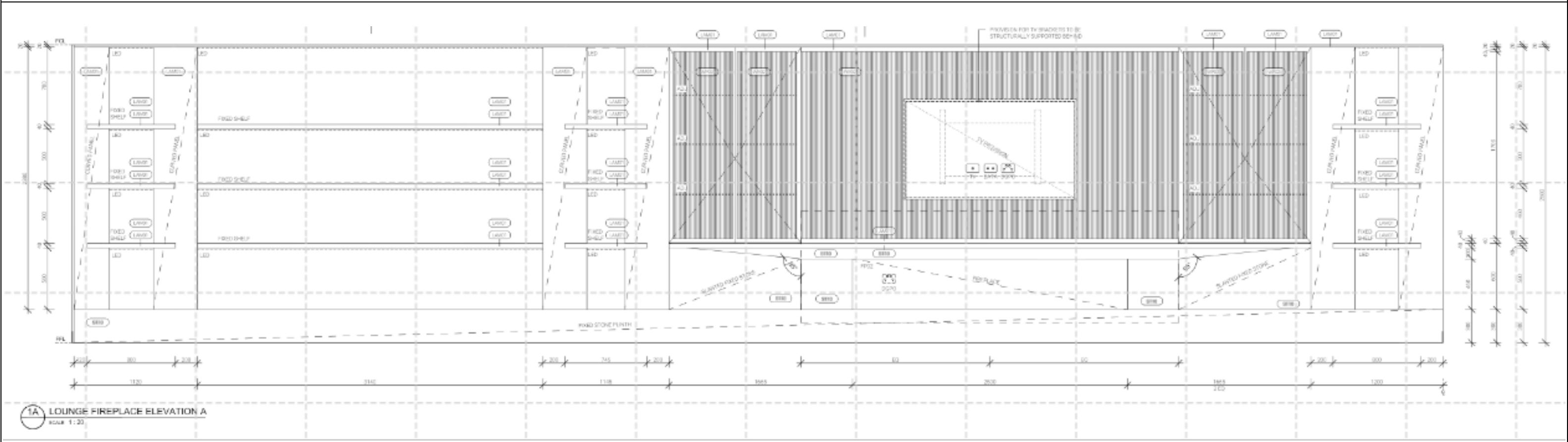


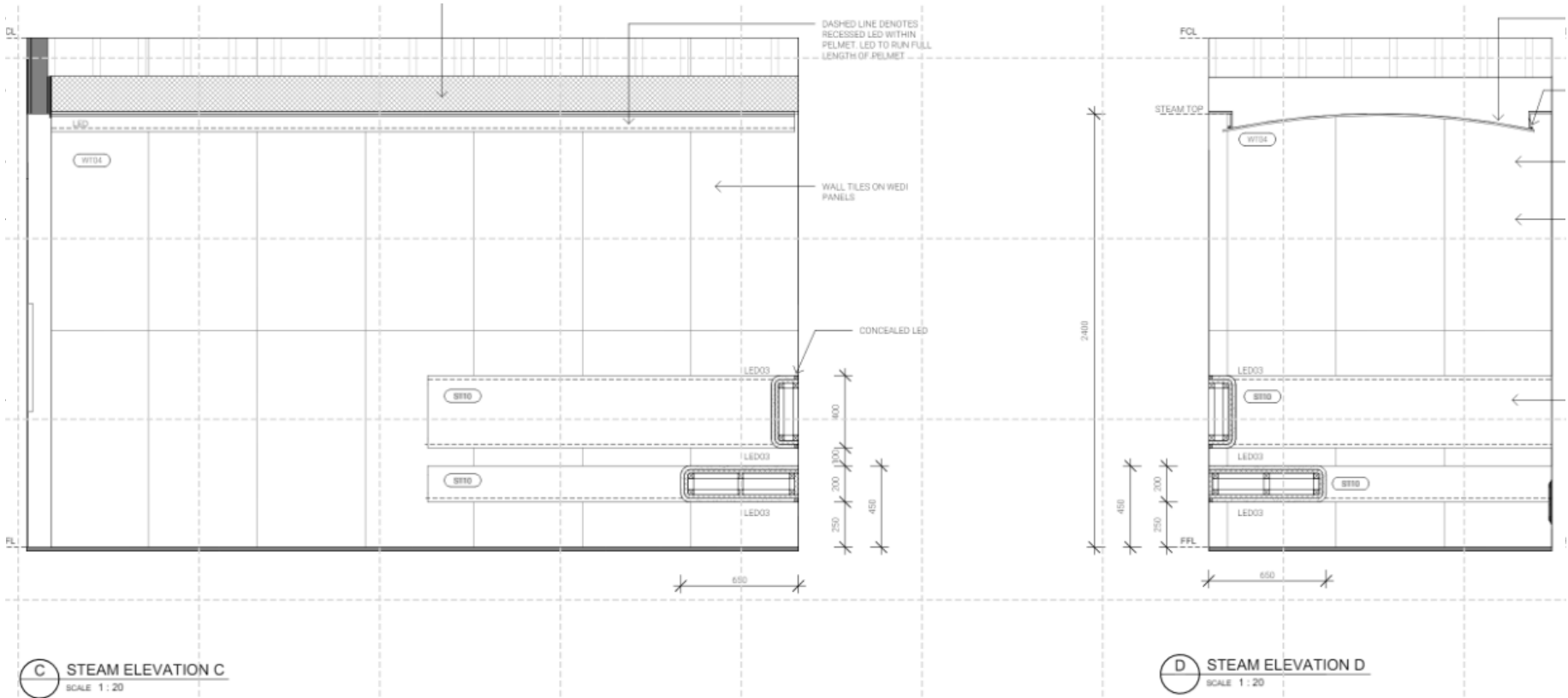
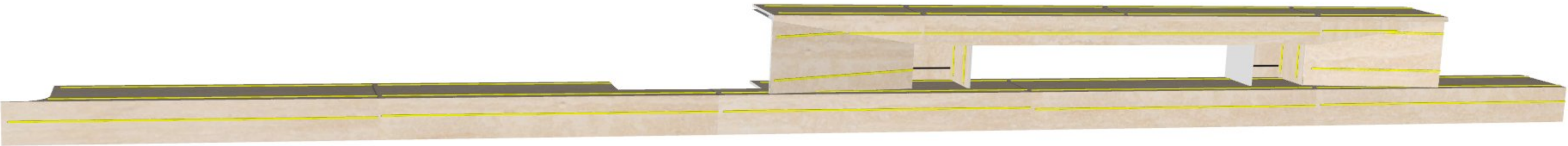


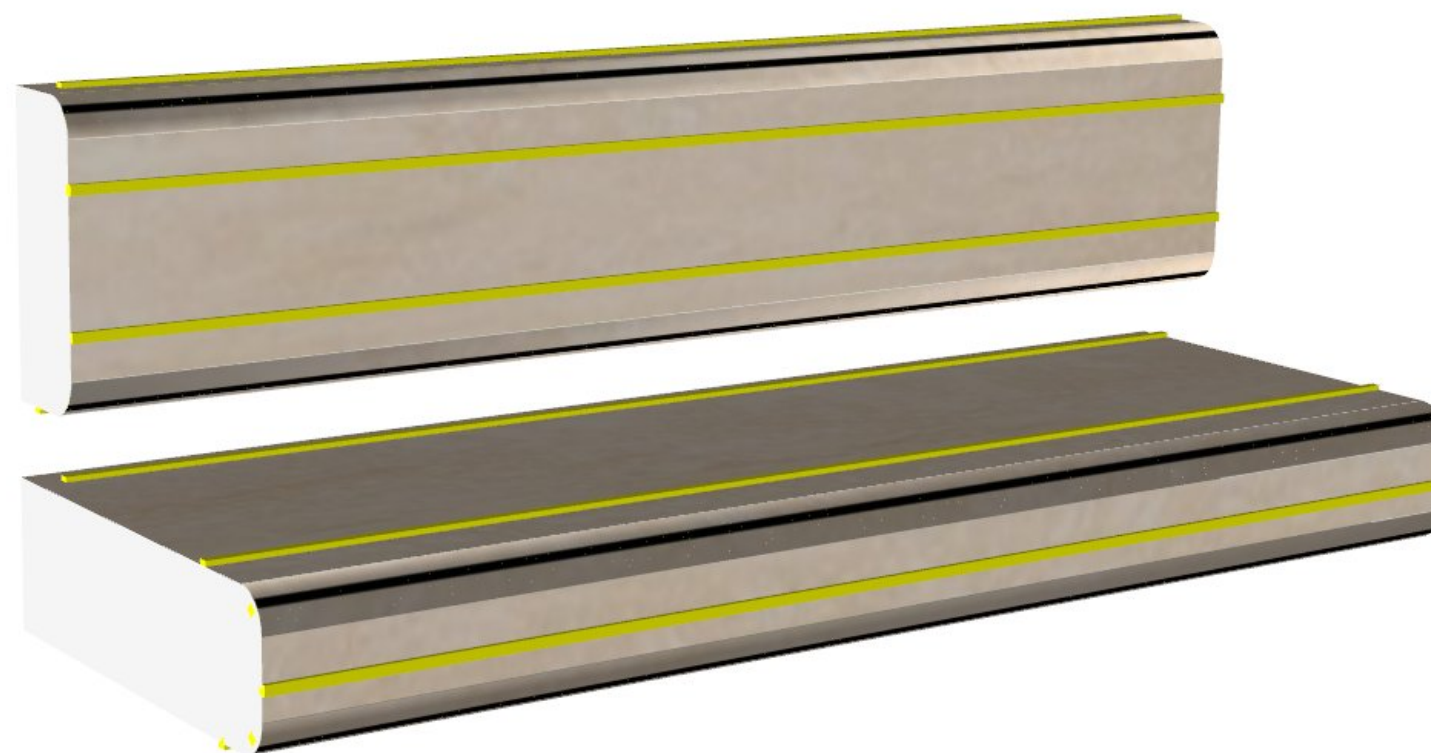
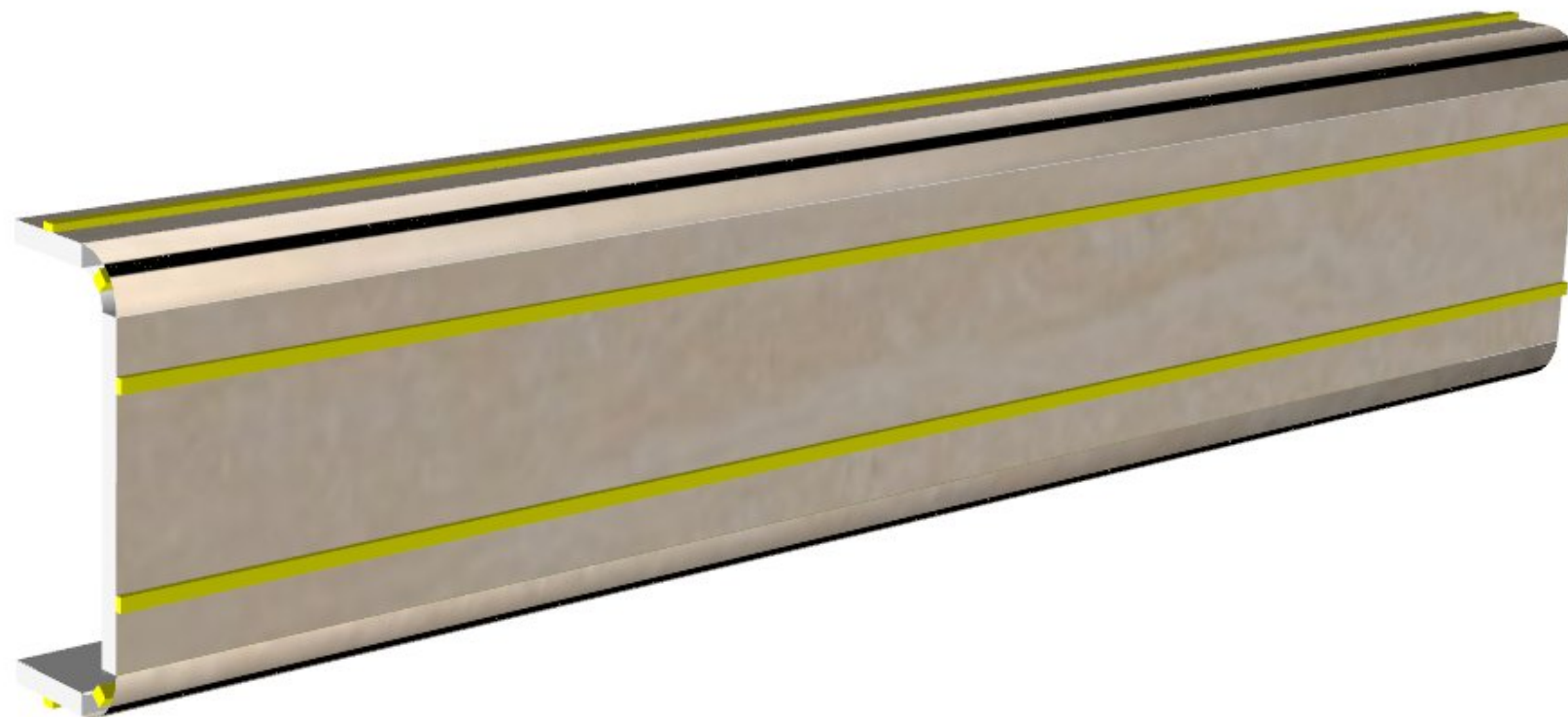


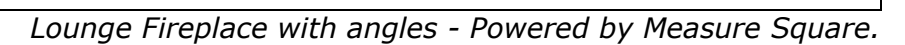


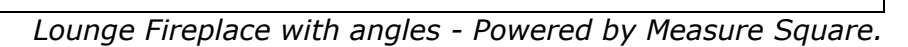
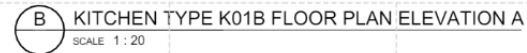


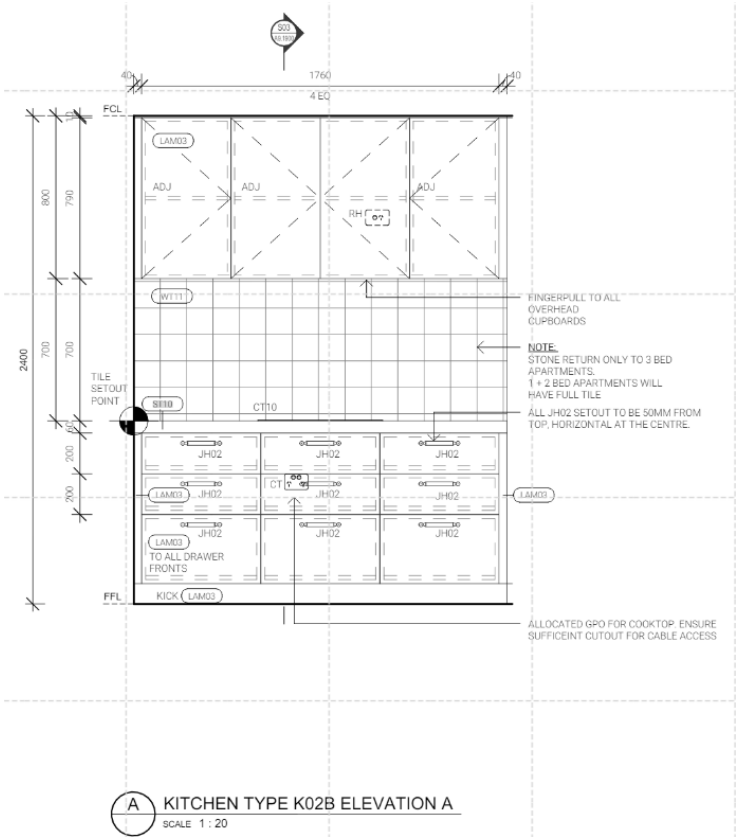


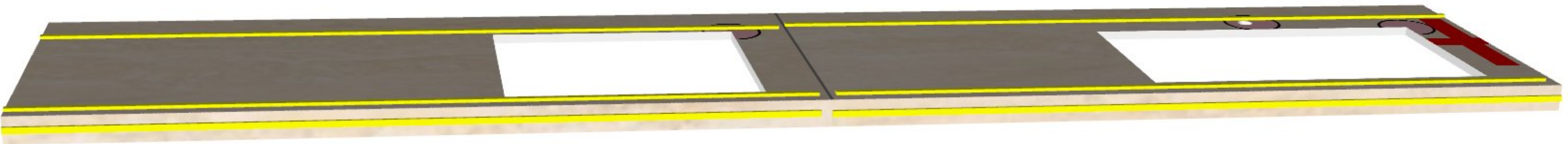


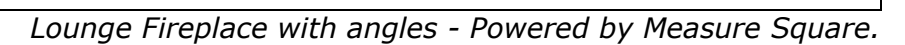


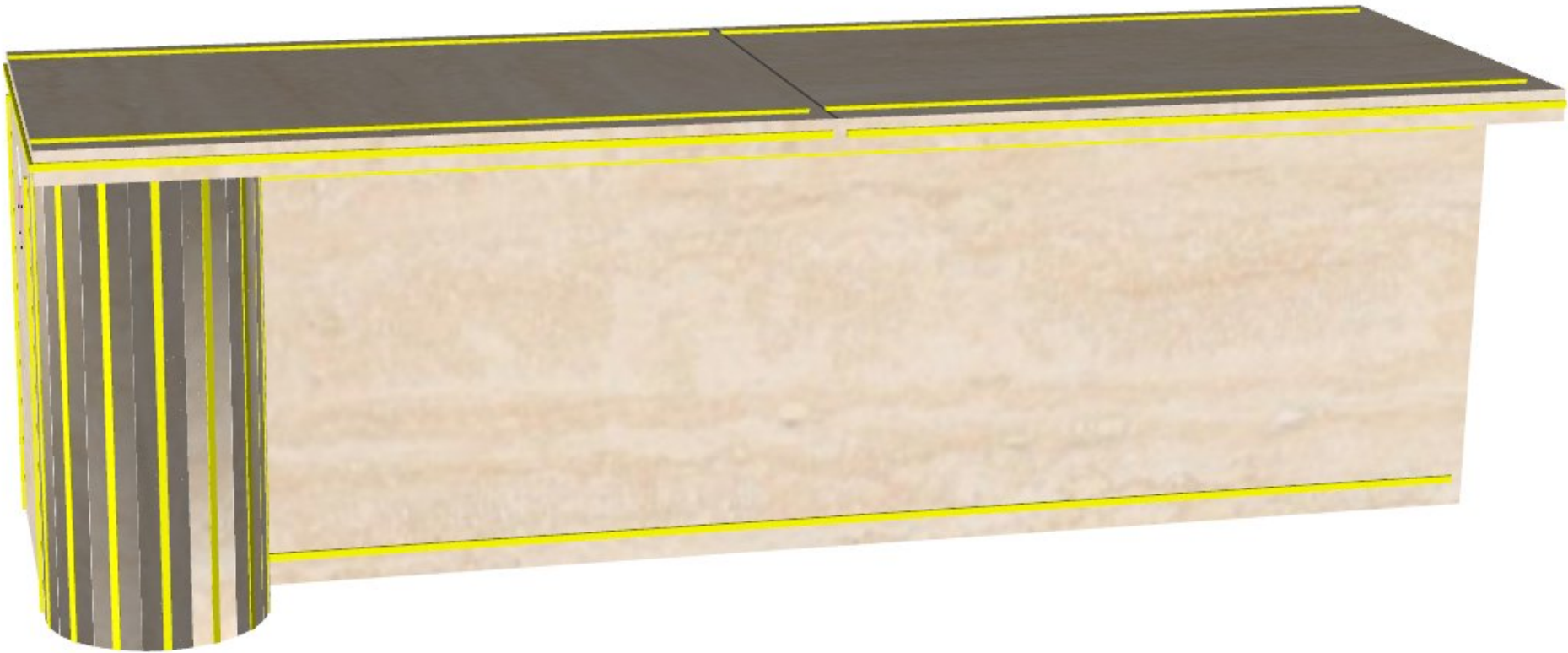
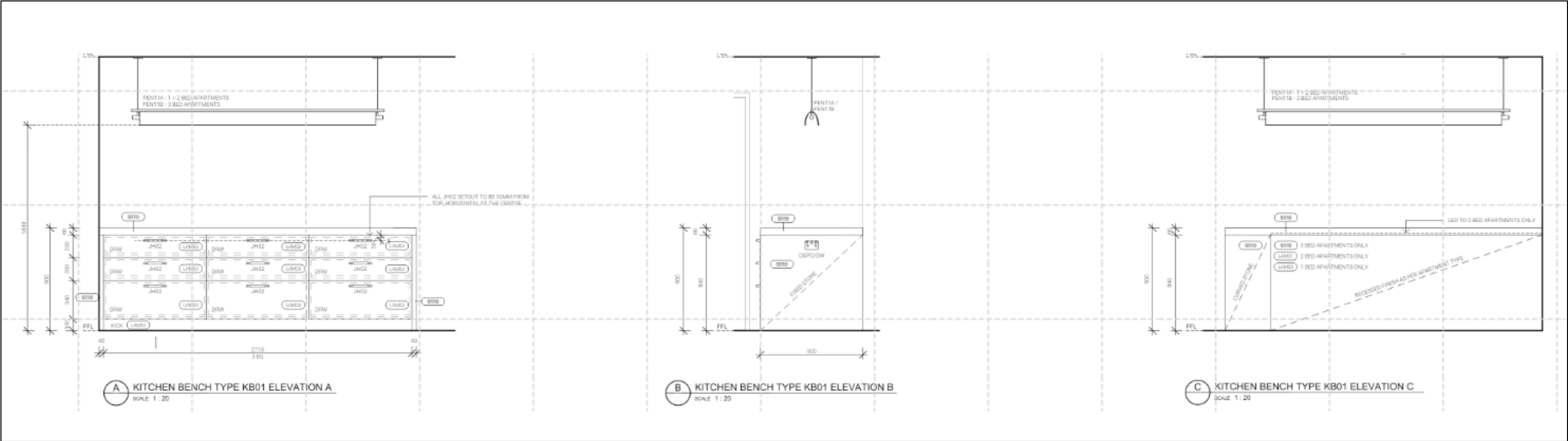


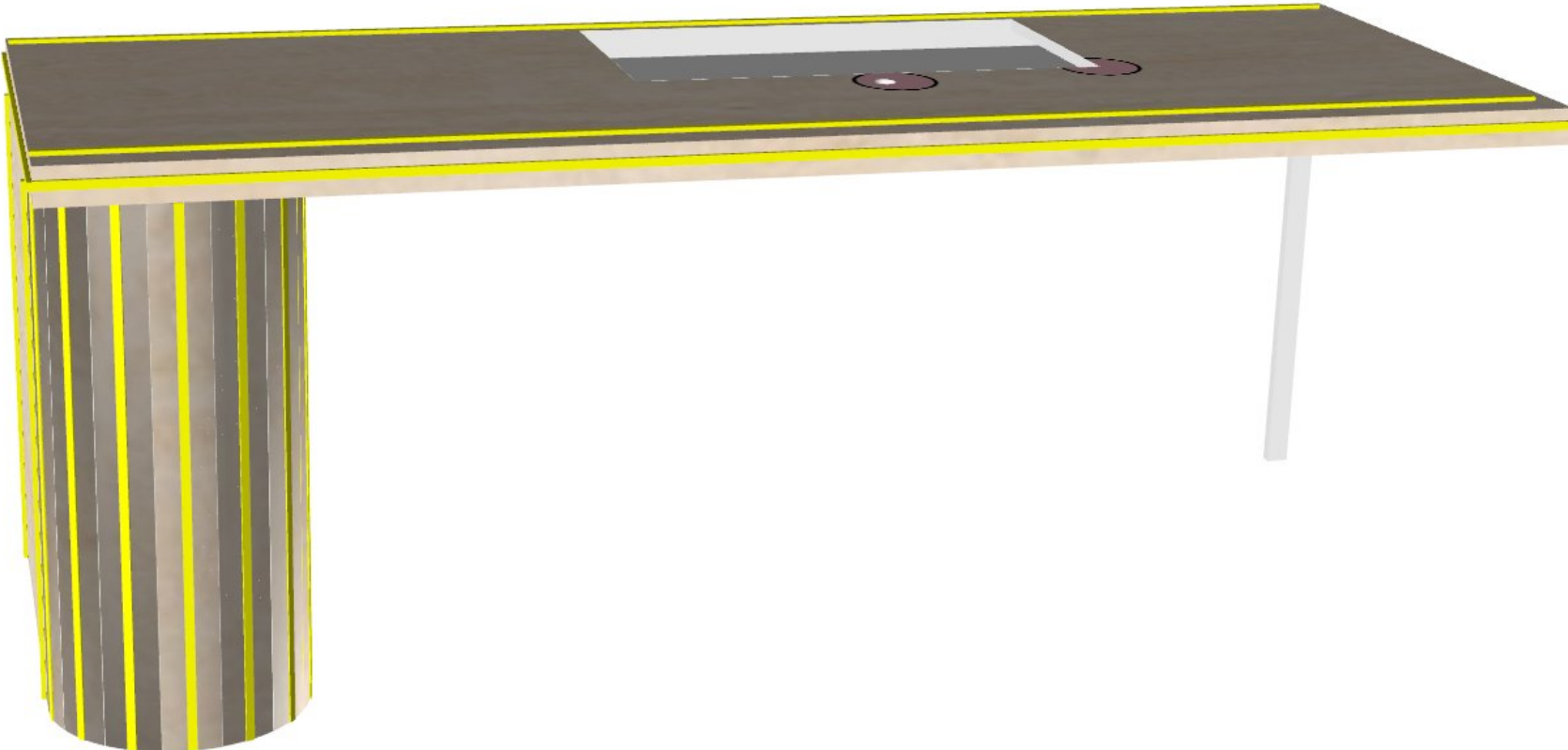
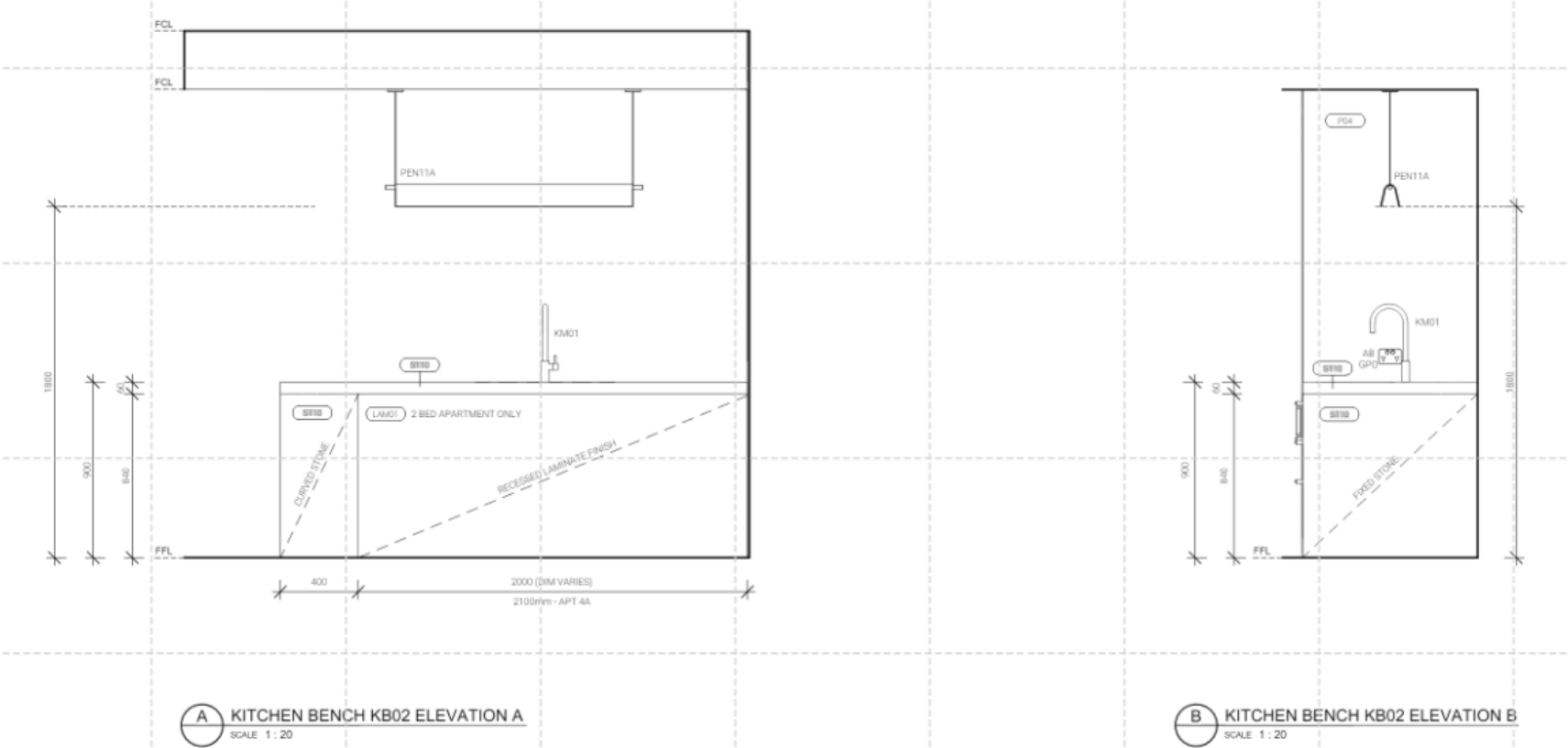


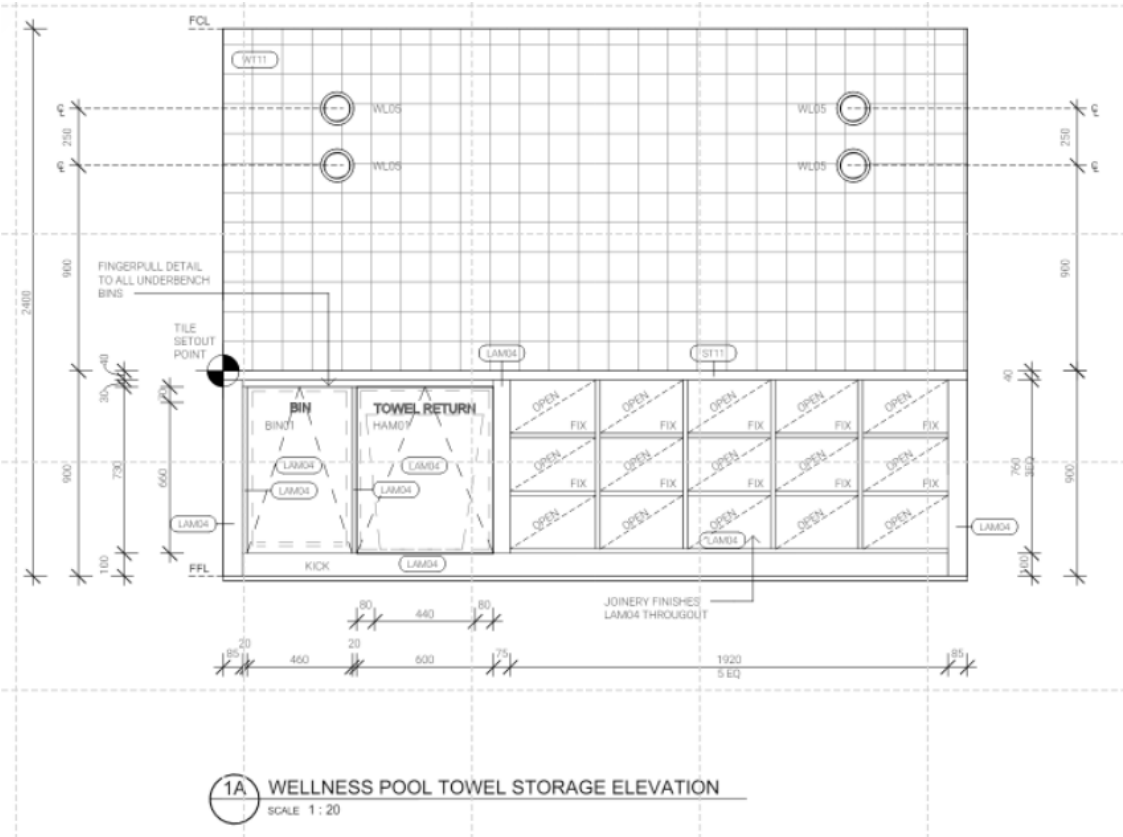


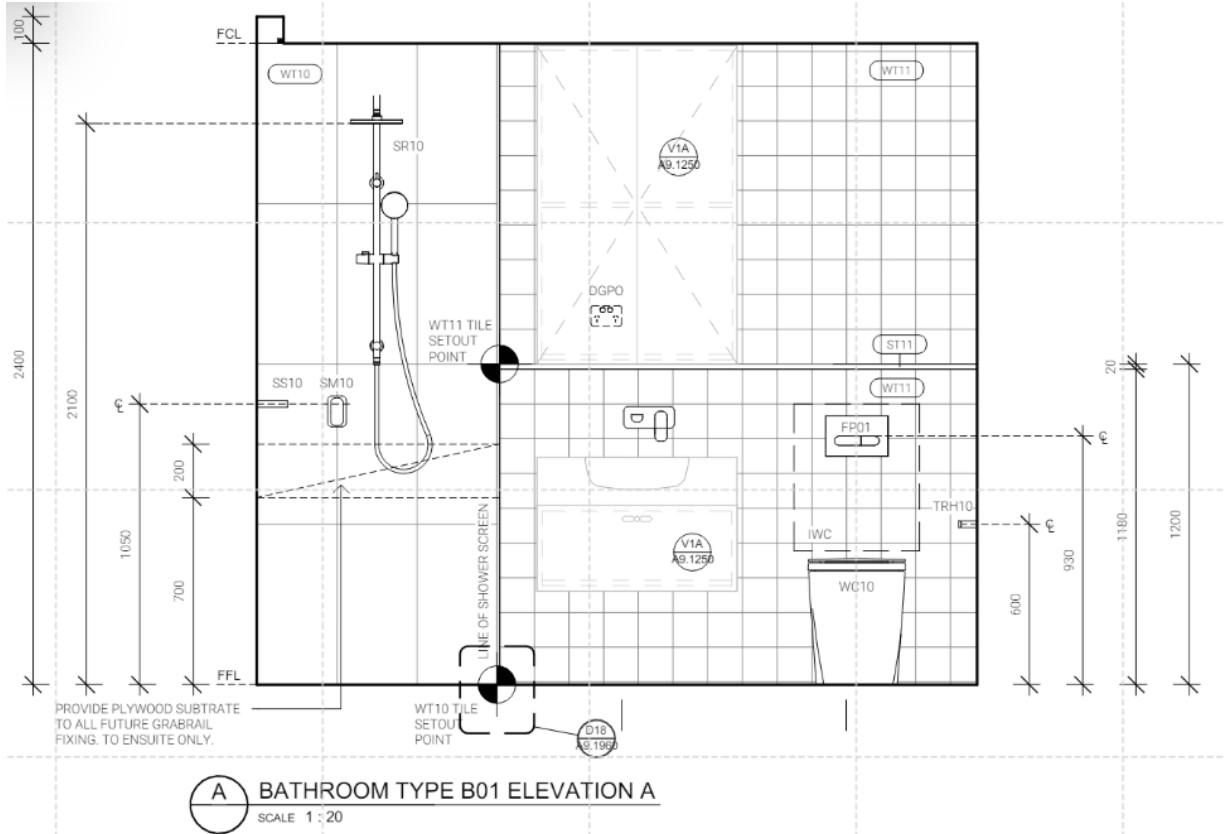


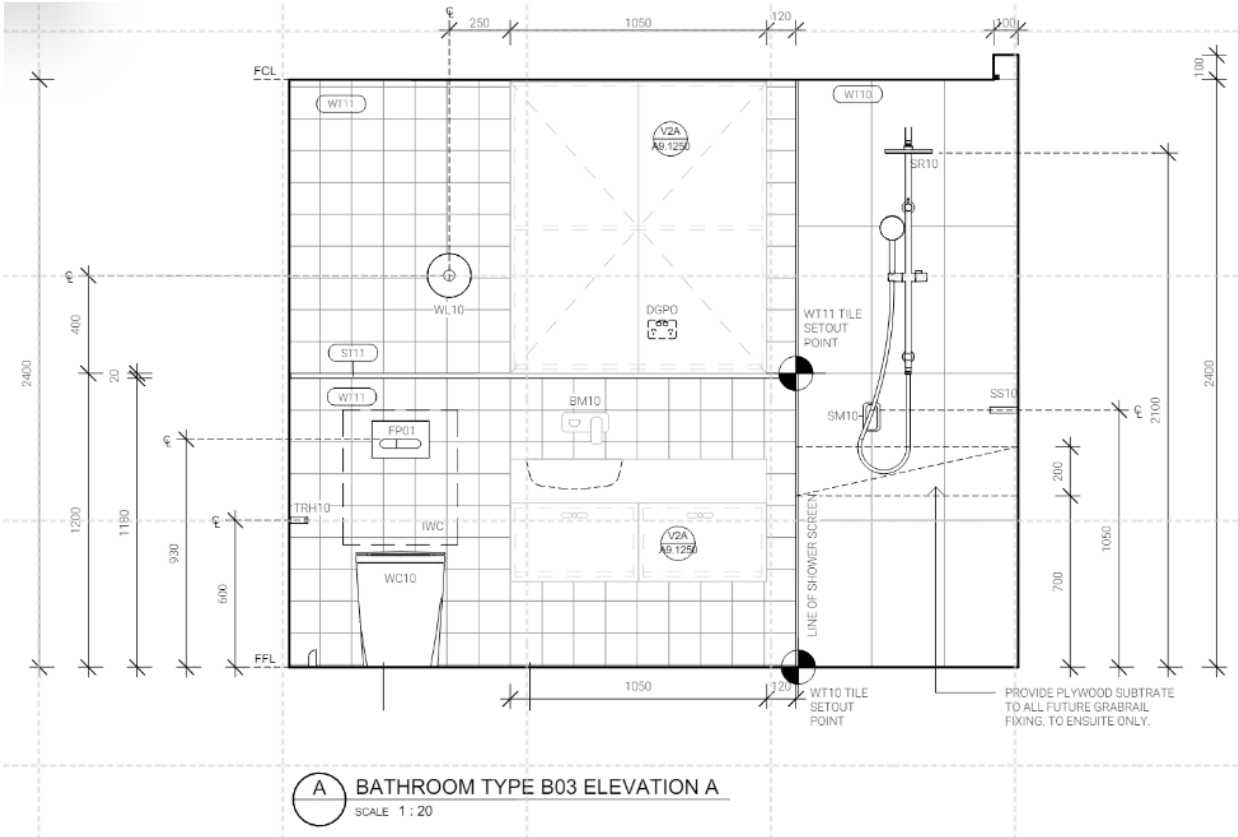


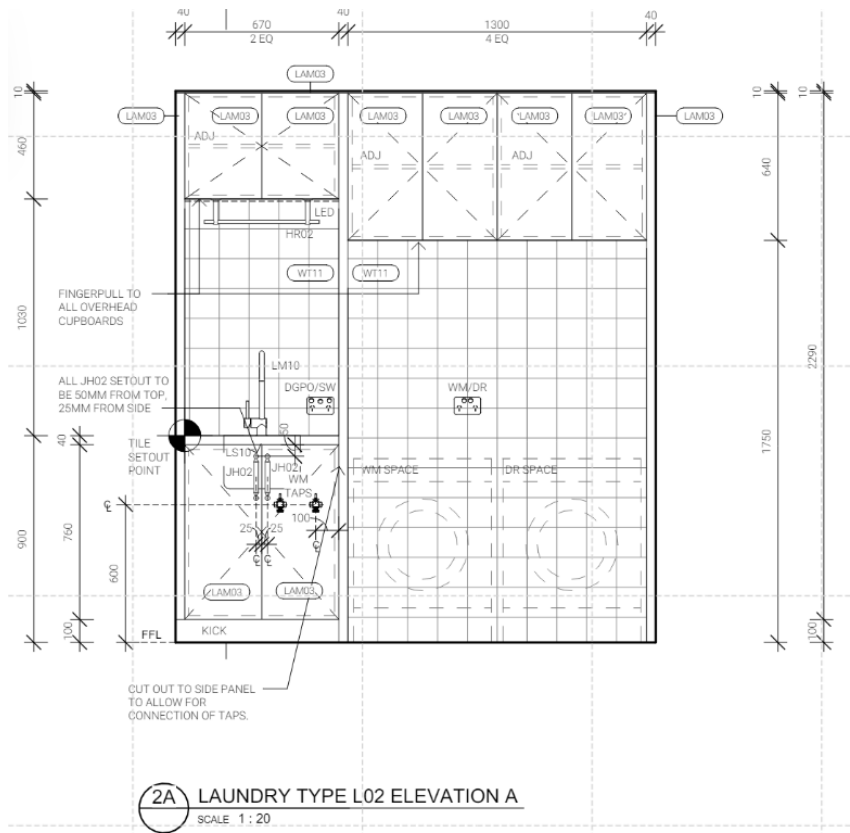


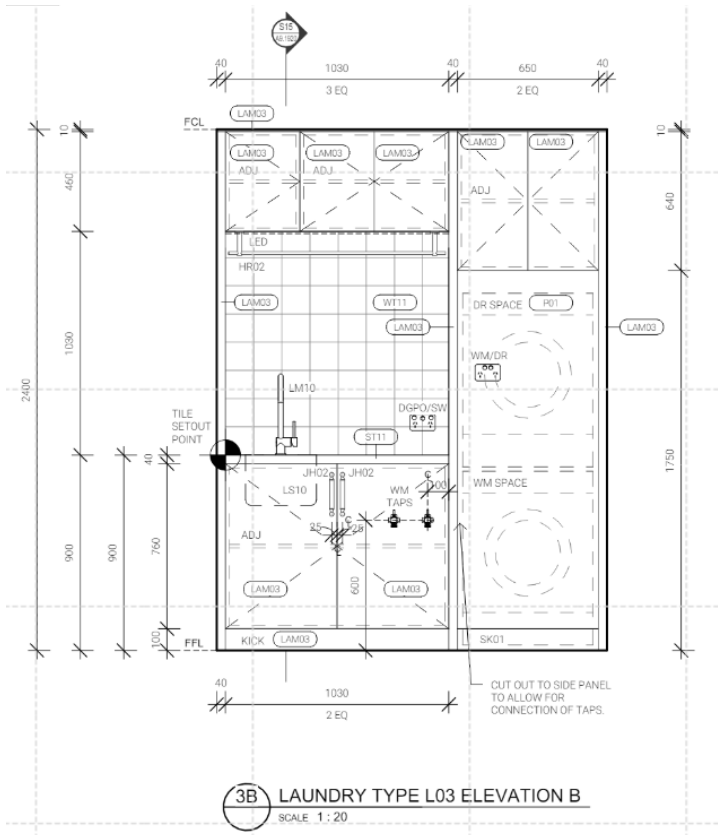


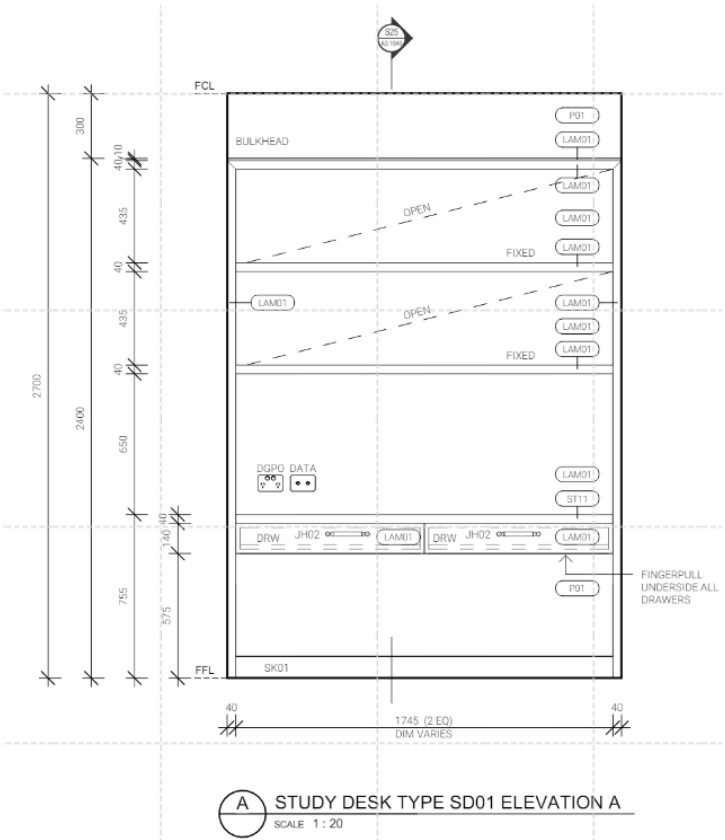


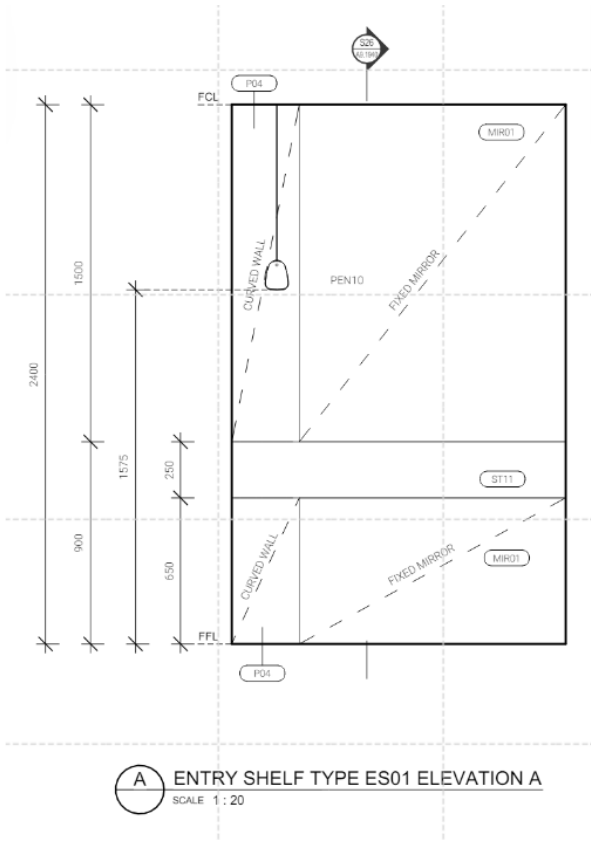


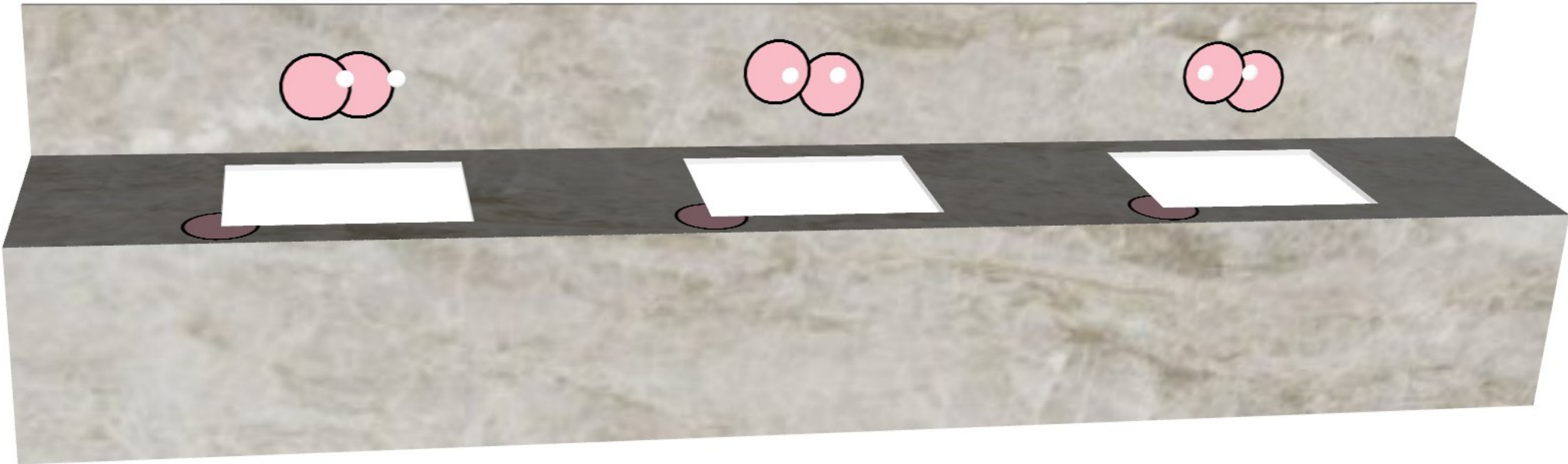


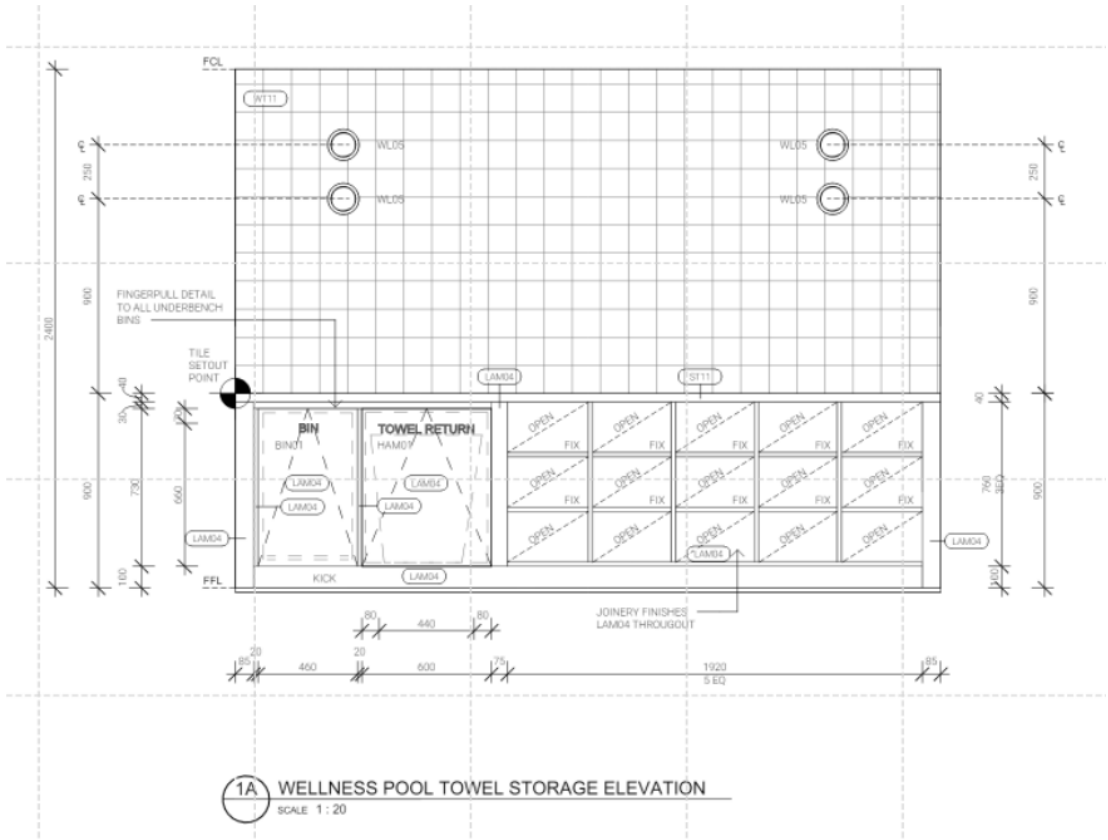


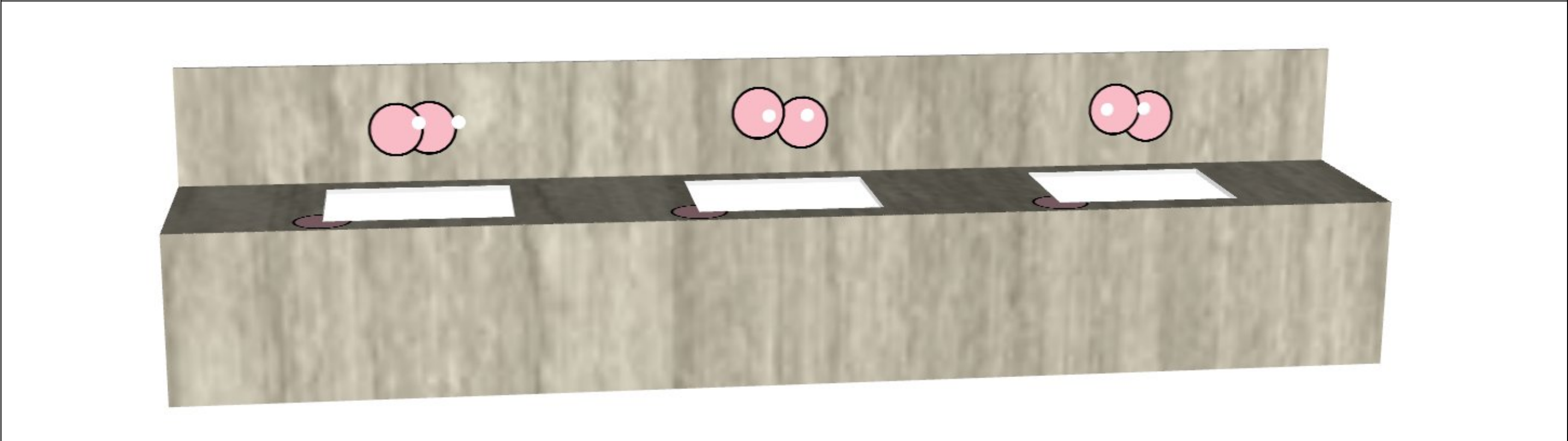
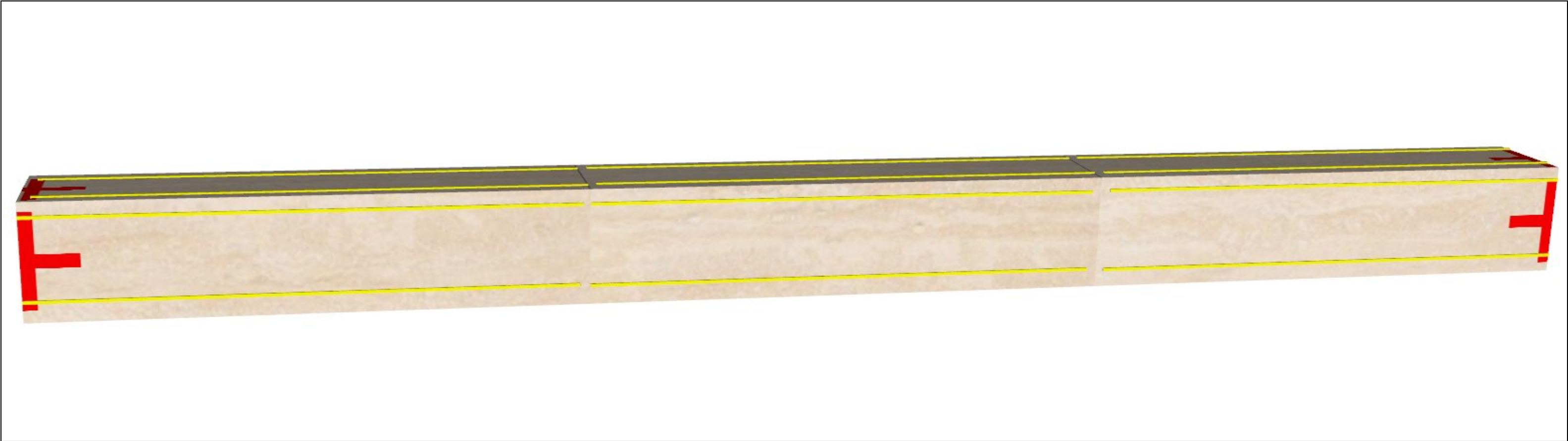




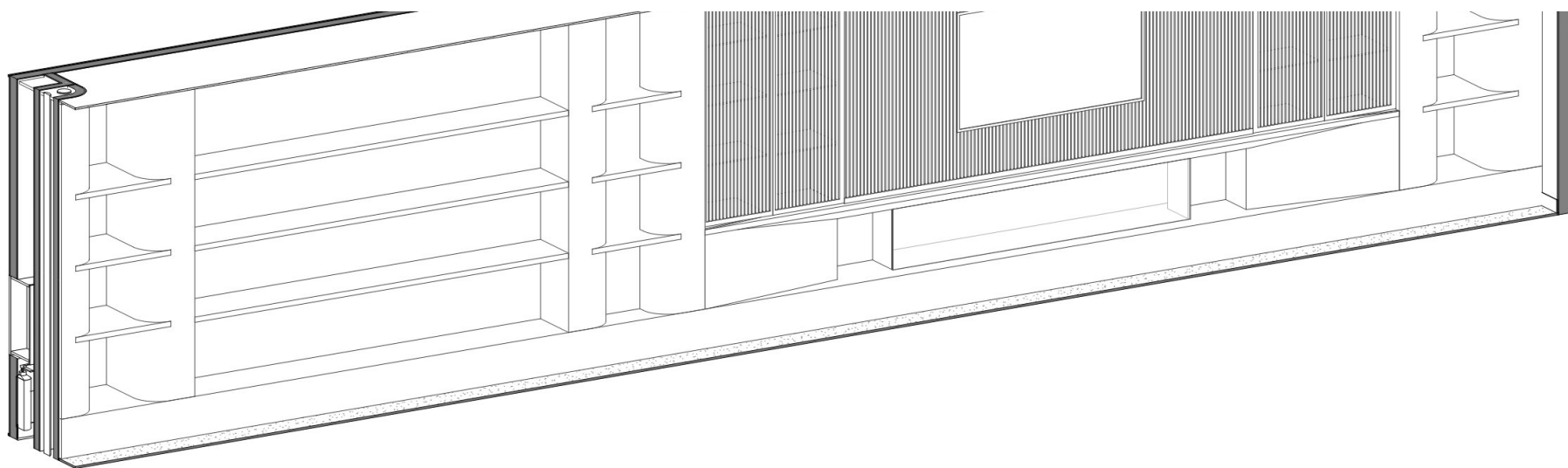












GE FIREPLACE 3D VIEW

- ST-10 - Travertine, Roman Classico Light - Vein Cut M²
- ST-10a - Install M²
- ST-10b - Protection M²
- ST-10c - Saw Cut M²
- ST-10d - Stone Sealing M²
- ST-10Ea - Bullnose Edging M
- ST-10Eb - Caulking M
- ST-10Ec - Mitre Cut M
- ST-10Ed - Miter Cut & Glue M

